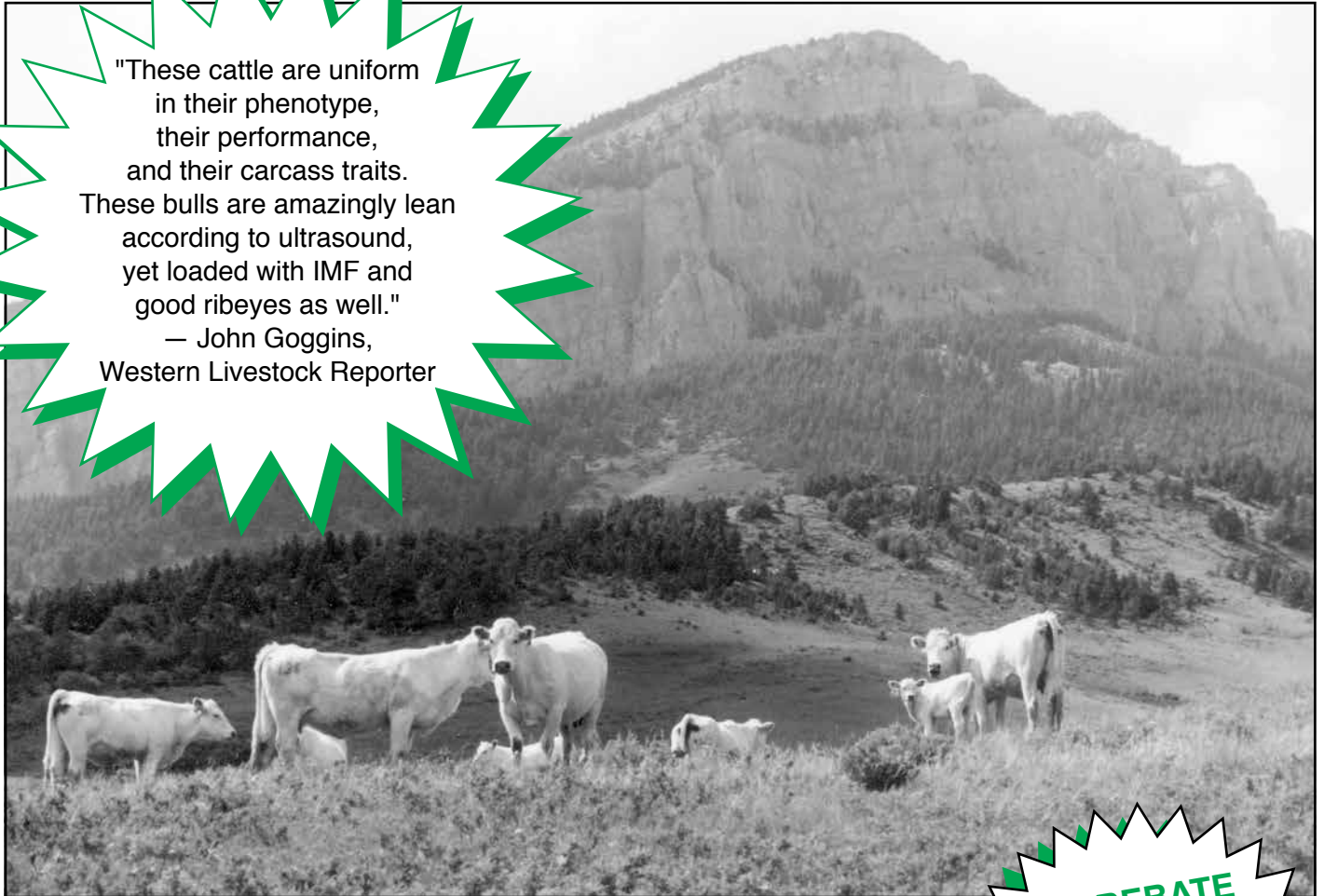


AC COBB CHAROLAIS 48TH SPRING BULL SALE

Performance, Fertility and Ultra Sound Tested

"These cattle are uniform in their phenotype, their performance, and their carcass traits. These bulls are amazingly lean according to ultrasound, yet loaded with IMF and good ribeyes as well."
— John Goggins,
Western Livestock Reporter



SATURDAY
April 15, 2017 — 12:30 P.M.

Western Livestock Auction
Great Falls, Montana

Sale Day Phone: 406-727-5400

COBB CHAROLAIS RANCH, INC

Box 348, Augusta, MT 59410

John & Cheryl - 406-562-3670
cobbchar@3riversdbs.net

Mike & Sarah - 406-562-3694
cobbcow1@3riversdbs.net

Catalog online: www.cobbcharolais.com

\$50 REBATE
Buyers who truck
their own bulls
sale day
will receive a
\$50 Rebate
Per Bull.

'SIGHT UNSEEN' AND INTERNET BIDDING:

If you cannot be present at the sale, we can help you pick out what you want through our "Sight Unseen" program, and also provide you with an independent bid taker. We guarantee your customer satisfaction with the bulls, or your money back.

IF YOU WISH TO BID ONLINE, PLEASE FOLLOW THESE DIRECTIONS:

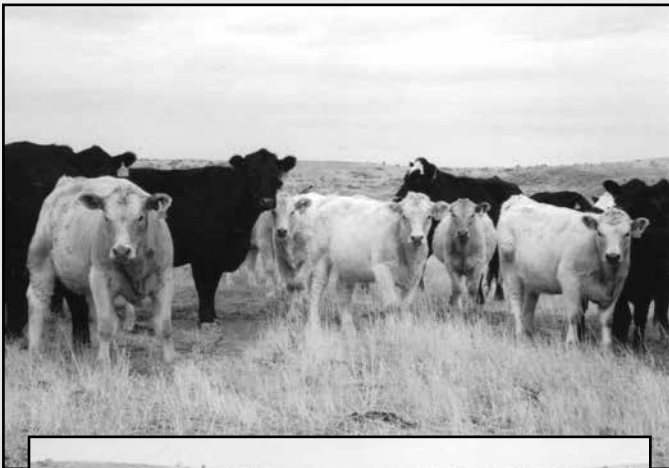
***Sale is broadcast **LIVE only on the website www.cattleusa.com**

1. ALL ONLINE BUYERS MUST BE PREREGISTERED ON THIS SITE PRIOR TO SALE DAY.
2. **Must call Sarah at Western Livestock auction yard to confirm the registration** after submitting a buyer approval request on Cattle USA website
Western Livestock's office hours: Mon.-Thurs MTN time, 406-727-5400,
or email her: info@westernlivestockmontana.com

***Questions?

Please contact Sarah at Western Livestock 406-727-5400 before sale day itself for answers, and to work out any remaining details.

TERMS—of the sale are only in U. S. Dollars currency in cash, check, or wire transfer unless the seller has approved other arrangements before the sale.



**Another job well done from the Trotter Ranch:
Mike, Karen & family near Richey, Montana**

Crossbred feeder heifer and steer groups from the dry summer & Fall 2007
Out of Stocker cows and Cobb Charolais bulls.

WELCOME TO THE COBB RANCH 48TH SPRING BULL SALE

A.B. Buddy Cobb and Cecile Cobb bought their first Charolais in 1954 after seeing the white cattle in Arizona and were impressed by how well they did on the desert there. Later, they bought Maximiliano and Jalisco from the Michaelis family at Kyle, Texas, the original and premier breeding brought to Mexico from France beginning in 1930 by Jean Pugibet. Almost all our breeding stock has come from this exclusively linebred herd from the Michaelis family.

Linebreeding involves obtaining the best cattle for the foundation herd, then closing the herd to outside breeding, and breeding within the herd. Extensive and ruthless culling, coupled with extensive herd record keeping, is an absolute necessity in order to retain and track only those best characteristics which fit the breeder's goals, and to purify the stock from defects. The purpose of linebreeding is to refine and "set" the desirable genes within the gene pool order to produce greater predictability and uniformity of progeny. The famous "Line 1" Herefords developed at Ft. Keogh Livestock Experiment Station at Miles City are an outstanding example.

Buddy Cobb Joined the American International Charolais Association as a charter member and was a director. He was also a director and charter member of the old Pan-American Charolais Association. He joined the MT Beef Performance Association a year after it started. He was a charter member and director of the Mexican Charolais Association, and a charter member of the Canadian Charolais Association. In 1992 he was named as member of the Charolais Hall of Fame.

Cobb Charolais continues on with Cheryl and John Cobb, and Sarah and Mike Cobb families. John and Mike have grown up with these special Charolais. The operation has sold Charolais breeding stock for almost 50 years, the first spring sale began in 1969, and we have second and third generation buyers. We truly appreciate all our customers. From the very beginning these cattle have been performance tested and selected for efficiency and economy, traits commercial cattle producers depend upon. These 60 years have allowed us to continuously improve and refine our product for consistent early maturity and fertility, more calving ease, heavy milking dams, structural soundness, and calm, docile temperaments, in addition to our trademark dependable gain and carcass traits.

In 2003, 36 head of newly banded Cobb purebred feeder steers averaged 3.77 lbs. of gain/day, with a 3.83 lb/day dry matter conversion, no growth implants or hormones. From this same group of steers averaged a dressing percentage of 63.7% off a 693 lb. carcass, live weight of 1088 lbs., averaging 2.2 sq. inch ribeye per cwt., with an avg. premium price to base weight at \$7.02 cwt. (data from independent feedlot). And these feeder steers were culls from the 2002 spring crop of bulls **before** the crop was placed on performance test.

The bulls we offer you have been screened and culled extensively for this sale, and are the results of almost 50 years of performance testing and selection from Montana's first and original Charolais herd.

LINEBRED CONSISTENCY



August 1963



August 1998

MONTANA'S ORIGINAL CHAROLAIS RANCH

Performance Selection Since 1956

Records from Birth to Consumer

THE FERTILITY TESTING, SCROTAL MEASUREMENTS AND BREEDING SOUNDNESS EXAM WAS DONE

BY HOFFMAN AI OF LOGAN, UTAH MARCH 14TH.

THE ULTRASOUND SCANS WERE DONE BY MATT LANE OF HUNTLEY, MT ON MARCH 5TH, & 6TH THE ULTRASOUNDS WERE PROCESSED BY ULTRAINSIGHTS LAB OF IOWA AND THE AMERICAN INTERNAT'L CHAROLAIS ASSN.

DENNIS METZGER - AUCTIONEER

WESTERN LIVESTOCK AUCTION, GREAT FALLS, MT - 406-727-5400

DENNIS METZGER - SALE AGENT - 816-519-8208

**All buyers must first register with the
Western Livestock Auction office before the sale.**

The office opens at 8 a.m. Mountain Daylight Time, phone number 406-727-5400.

DESCRIPTION OF SELLING PROCEDURES - TERMS AND CONDITIONS

PRELIMINARIES—will include essential announcements only, a brief description of the Cobb breeding program and the performance data in the catalogue and a review of the selling procedure. Thereafter bulls will be sold without pause, based on their records.

SALE ORDER—each in descending order of Weight Per Day of Age index.

AUCTION PERSONNEL—will include an auctioneer and at least two bid receivers.

THE SELLING ENVIRONMENT—every effort will be made to maintain a quiet atmosphere in which buyers can make their business decisions. The auctioneer will recite the current bid and the asking bid in a conventional chant, but will keep his delivery clear and deliberate. The delivery will slow at the end of bidding for each lot, to give the buyer some time to consider their bid decision. The animal must sell itself, based on its own record and appearance, supported by the seller's selective breeding program.

MINIMUM BIDS—The minimum bids shall be announced at the time of sale. All bulls will be sold to the highest bidder provided that the bid is not less than the announced minimum.

BIDDING—Bidders are requested to make clear signals to clearly identify the bidding. Potential buyers may request identification of the bidder at any time.

DISPUTES—among bidders will be settled by the announcer by reopening the bidding among the parties involved. If no further bid is made, the buyer shall be the party from whom the announcer accepted the last bid. The announcer's decision shall be final.

TERMS—of the sale are cash or check unless the seller has approved other arrangements before the sale. The right of property shall not pass and release of the cattle shall not be made until settlement is completed with the sale clerk.

PURCHASER'S RISK—begins as soon as the animal is sold. Bulls will be cared for at the seller's expense and the purchaser's risk until noon April 16, 2017 at the sale location.

CATTLE INSURANCE—will be available.

SHIPPING—all prices are F.O.B. Great Falls. Western Livestock Auction Center will assist in coordinating shipments immediately after the sale but no risk is assumed by Western Livestock or by the seller.

ANNOUNCEMENTS—from the auction stand will take precedence over printed matter in the catalogue.

CERTIFICATES OR REGISTRY—American-International Charolais Association registration papers will be furnished for the purebred bulls only if requested by buyer.

HEALTH—all animals are virgin bulls and can carry clearance for interstate shipment.

BREEDERS GUARANTEE—all bulls have been tested for breeding soundness and are fully guaranteed breeders. Bulls must be demonstrated to be non-breeders, barring accident or illness, under normal conditions at their first breeding season, if any adjustment is to be made. Any other guarantees are solely between buyer and seller. In no instance shall seller be responsible for more than the purchase price.

ACCIDENTS—although every precaution will be taken to protect the safety and comfort of buyers, neither the Western Livestock Auction nor the seller assumes any responsibility in this matter and disclaims any liability, legal or otherwise, in the event of accident or loss of property.

TRUCKING—A \$50.00 discount per bull if you truck your own bulls on sale day. Free delivery of bulls within 500 miles of Great Falls, MT to a central point. If bulls are to be trucked further than the 500 miles, buyer pays for the trucking amount AFTER this distance to the central delivery point.

EXPLANATION OF NUMERICAL VALUES

BIRTH WEIGHTS:

Birth weights themselves are no indicator of ease of calving. If the weight is in the length, very little calving trouble will develop. But if the weight is in the width or depth, trouble will be encountered. In our experience, it is the shape of the calf, more than weight that gives trouble.

205 DAY WEIGHTS:

They are mathematically corrected weights (not actual weaning weights) corrected as if every calf were born on the same day. The 205 day weight is the dam's milking ability. The bull has little to do with this factor except in crossbreeding. If you do not keep replacement heifers, the bull's 205 has no value.

NI-NURSING Index:

Cows are compared for milking ability. 100 is average. If you want to increase milk in your replacement heifers, pick a high NI.

145 Day Test Gain:

Our bulls are fed a high roughage ration, a specially formulated bull development feed provided for us by West Feeds, Great Falls, MT. Feeder calves are fed a high concentrate ration and should meet or exceed these gains.

145 Day Gain Index:

A comparison of gains, 100 is average. You must bear in mind that this is an index only within this particular herd and these particular animals. You cannot compare gains from one performance test to another due to different environment, climatic conditions, and rations.

Weight per Day of Age (WDA):

This is the most meaningful figure as to what the bull is himself. In our catalogue the bulls are placed and sold by WDA. You will notice that we have made no 365 day correction. The bulls WDA is for his individual lifetime of days from birth to the weigh-off date and weight. No correction of age of dam has been made.

WDA Index:

Comparison of WDA, 100 is average. WDA's are actual and not adjusted mathematically. If they were to be adjusted, those bulls from first calving cows would have much higher indexes.

Fertility Test:

All of these bulls have been examined for semen quality and structural and functional soundness. A fertility test only means that a bull's semen is capable of settling cows. We guarantee our bulls as breeders and fertile.

American-International Charolais Association papers will be furnished for the purebred bulls if desired upon request to sell.

Ultrasound

Ultrasound has been used to measure fat depth in beef cattle since the 1950's. Modern ultrasound technology can also measure ribeye area.

Carcass traits are supposed to be moderately to highly heritable. This means that the carcass characteristics of a bull will be passed on to his progeny, similar to average daily gain or weight per day of age.

Bull tests are based on average daily gain and weight per day of age. Ultrasound measurements go one step further and indicate whether bulls are growing muscle, or fat.

Fat: Back fat

Fat depth influences lean meat yield. Fat bulls have less lean meat in the carcass. Secondly the fat measurement gives an indication of the bull's fleshing ability.

Marbling (IMF or Intramuscular Fat)

Is the amount of internal fat in the muscle. A score of 3-3.9 is Standard (traces of marbling), 4-4.9 is Select (slight marbling), 5-5.9 is Choice, or small amount of marbling.

Ribeye Area

The REA indicates the ribeye area. The ribeye is the largest muscle in the body at birth, so REA gives an indication of overall carcass muscling. However, REA is influenced by body weight. Within a breed, the largest REA often belongs to the heaviest bull. Some REA is also expressed on a weight adjusted basis. Adjusting REA for body weight helps to determine which bulls are more muscular and which bulls are simply heavy bulls carrying a lot of weight.

As with all genetic traits, ultrasound measurements should only be compared among animals of similar age and breed that have been managed under the same environment. Since genetic improvement comes from within-breed selection, comparing measurements of individual animals from two different breeds is of little value. Finally, as with growth rate, carcass composition is partly dependent on the feeding program.

The importance of carcass trait information will increase as value based marketing and quality assurance programs become more widespread. However, many other traits such as reproductive performance, structural soundness, calving ease, growth rate and the birth, weaning and yearling weights must also be considered when incorporating carcass traits into a breeding program. Single trait selection is always discouraged.

REFERENCE SIRE A008**ABC ALPANTORO**

Birth Date: 2/20/2013

M 842743

BW	Act. WW	205 Wt	NI	Gain	Index	WDA	Index	YW Wt	Scr
102	828	809	114	4.05	120	3.66	106	1460	37

EPDS:	BW	WW	YW	Milk	Mat.	Total Sire Index
	1.2	30	55	7	22	194.83 50%

ABC KARL K366 SCURS

ABC RAFAEL R246 SCURS

ABC MONTORA FERNAUT F812

ABC VOLVER W142

ABC KAN K291

ABC KANA SHARON M467

ABC EXODANA H342

ABC PESO P024 POLL

ABC TIRADOR T155 POLL

ABC KANA ALILARA N725

ABC TIRADORA RIO BERNICE X884 POLL

ABC JACOB J550 POLL

ABC JAC MAGGIE L128

ABC MAGGIE H475

REFERENCE SIRE A058**ABC ANCHO A058 SCURS**

Birth Date: 3/8/2013

M 842745

BW	Act. WW	205 Wt	NI	Gain	Index	WDA	Index	YW Wt	Scr
95	748	721	101	4.27	127	3.66	106	1460	38

EPDS:	BW	WW	YW	Milk	Mat.	Total Sire Index
	0.1	39	81	0	20	223.28 5%

ABC MAGICO TORO M035 POLL

ABC UNIVERSO U363

ABC KANA LATORAMA M421

ABC EXCELENTE X249

ABC GERNIMO G242

ABC GERA TRANIKE L368

ABC TRACY NICKEDMA E762

ABC HOWE H27

ABC PROSPERO P302

ABC HILDA H411

ABC PROSPERA GENACLEO S479

ABC LATORO ATORO D398

ABC LATORA GENACLEO G668

ABC MONTINA C373

REFERENCE SIRE A372**ABC ARGENTORO A372**

Birth Date: 4/6/2013

M 842749

BW	Act. WW	205 Wt	NI	Gain	Index	WDA	Index	YW Wt	Scr
97	692	816	115	3.57	106	3.68	106	1315	35

EPDS:	BW	WW	YW	Milk	Mat.	Total Sire Index
	4.2	51	104	1	27	241.58 1%

ABC KNUT K532 POLL

ABC MAGICO TORO M035 POLL

ABC EDLA HILSONA J820

ABC XERXES X018 POLL

ABC MAGICO TORO M035 POLL

ABC MAJA MACKIE T020 POLL

ABC NILARIA MACKIE R414

ABC NILARIO N398

ABC TITANO T271

ABC TOREDLA H95

ABC TITANA ABRAGENA X839

ABC MAGICO TORO M035 POLL

ABC MAJA ABRAGENA T806 POLL

ABC KORA ROBGENA N146

REFERENCE SIRE A047**ABC ABSOLUTO CLASICO**

Birth Date: 3/5/2013

M 842744

BW	Act. WW	205 Wt	NI	Gain	Index	WDA	Index	YW Wt	Scr
92	732	754	106	4.82	143	3.73	108	1470	37

EPDS:	BW	WW	YW	Milk	Mat.	Total Sire Index
	3.1	60	123	-5	25	257.18 1%

ABC KNUT K532 POLL

ABC MAGICO TORO M035 POLL

ABC EDLA HILSONA J820

ABC XERXES X018 POLL

ABC MAGICO TORO M035 POLL

ABC MAJA MACKIE T020 POLL

ABC NILARIA MACKIE R414

ABC NIKETORO N197 POLL

ABC TESORO T211 POLL

ABC JACOBA ROSALINA N192 POLL

ABC TESORA KNUT KATLARGA X889

ABC KNUT K532 POLL

ABC KNUA KATLARGA R199

ABC KNOA HISPA M002

REFERENCE SIRE A118**ABC ANGEL A118 POLL**

Birth Date: 3/16/2013

M842746

BW	Act. WW	205 Wt	NI	Gain	Index	WDA	Index	YW Wt	Scr
84	606	643	90	3.74	111	3.20	92	1255	35

EPDS:	BW	WW	YW	Milk	Mat.	Total Sire Index
	-1.5	9	36	6	-4.2	188.19 65%

ABC METEOR M303 POLL

ABC BERNICIO P084

ABC LAMAXA LAHILTA L738

ABC YGNACIO Y081

ABC LATORO ATORO D398

ABC LATORA BERDINE P250

ABC MONTA BERDINE K211

ABC KNUT K532 POLL

ABC MAGICO TORO M035 POLL

ABC EDLA HILSONA J820

ABC MAJA MACDARTE X034 POLL

ABC KAN K261 POLL

ABC KANA MACDARTE N722 POLL

ABC TROJA MACDARTE G675

REFERENCE SIRE A424**ABC AQUILINO A424**

Birth Date: 4/14/2013

M 842750

BW	Act. WW	205 Wt	NI	Gain	Index	WDA	Index	YW Wt	Scr
96	608	827	117	5.45	162	4.63	134	1360	36

EPDS:	BW	WW	YW	Milk	Mat.	Total Sire Index
	4.1	56	99	-3	-4.7	230.32 3%

ABC NIKETORO N197 POLL

ABC TESORO T211 POLL

ABC JACOBA ROSALINA N192 POLL

ABC YNOCENCIO Y153

ABC JILARIO J195

ABC JILL FERNAUTA P237

ABC MONTORA FERNAUT F812

ABC KNUT K532 POLL

ABC MAGICO TORO M035 POLL

ABC EDLA HILSONA J820

ABC MAJA CRISTALISA S087

ABC FORTUNE F77

ABC FORTUNA CRYSTALISA L011

ABC EDLA CRYSTAL J99

REFERENCE SIRE B274**ABC BENEFICIO B274**

Birth Date: 3/28/2014

M 860613

BW	Act. WW	205 Wt	NI	Gain	Index	WDA	Index	YW Wt	Scr
95	670	846	118	4.90	135	4.58	132	1435	43

EPDS:	BW	WW	YW	Milk	Mat.	Total Sire Index
	2.3	42	90	4	25	227.75 4%

ABC BERNICIO P084

ABC VALOR W142

ABC FREYA BERDINE K332

ABC YNCENDIO Y113 POLL

ABC MAGICO TORO M35 POLL

ABC MAJA PERPAMA P048 POLL

ABC JARVA PERPAMA M401 POLL

ABC HORATIO GENE G53

ABC LORATIO L426

ABC VECTINA MAVIS B212

ABC LORA KATIELARGA R177

ABC GERONIMO G242

ABC GERA CHAREGUS K274

ABC DANA F392 POLL

REFERENCE SIRE X853**ABC XALVADOR X853**

Birth Date: 9/5/2010

M 814799

BW	Act. WW	205 Wt	NI	Gain	Index	WDA	Index	YW Wt	Scr
92	808	698	119	3.69	113	3.30	103	1355	38

EPDS:	BW	WW	YW	Milk	Mat.	Total Sire Index
	5.4	57	91	-7	22	218.58 9%

ABC LOTHARIO L146 POLL

ABC NIKETORO N197 POLL

ABC MONA NIKE H071

ABC SALIENTE S263

ABC NIKKO 2 TWIN B285

ABC NIK 2 PERNAGAN K412

ABC PERFECTA NAGAN D003

ABC LATORO ATORO D398

ABC KORO K493

ABC FANA HERNA D334

ABC KORA ALANA JEAN N787

ABC HORATIO C189

ABC HERMOSA ALANA J512

ABC NICKI ALANA E118

REFERENCE SIRE Y214**ABC YOEL Y214**

Birth Date: 3/27/2011

M 814796

BW	Act. WW	205 Wt	NI	Gain	Index	WDA	Index	YW Wt	Scr
101	712	763	113	4.51	122	4.03	119	1415	35

EPDS:	BW	WW	YW	Milk	Mat.	Total Sire Index
	3.7	36	74	-4	14	208.18 25%

ABC LOTHARIO L146 POLL

ABC NIKETORO N197 POLL

ABC MONA NIKE H071

ABC TESORO T211 POLL

ABC JACOB J550 SCURS

ABC JACOBA ROSALINA N192 POLL

ABC GUIA ROSALINA J261 POLL

ABC KORO K493

ABC PRIMOKORO P132

ABC ULTRA KARI G098

ABC PROSPERA GALICA T126

ABC KAN K261

ABC KANA GALICA N715

ABC ULGI LAMANA L389

REFERENCE SIRE X018**ABC XERXES X018 POLL**

Birth Date: 2/28/2010

M 810103

BW	Act. WW	205 Wt	NI	Gain	Index	WDA	Index	YW Wt	Scr
80	722	716	104	4.35	129	3.71	111	1400	38

EPDS:	BW	WW	YW	Milk	Mat.	Total Sire Index
	4.2	51	111	0	26	246.35 1%

ABC ULTRO GUIDO G092 POLL

ABC KNUT K532 POLL

ABC UNA MACKIE E395 POLL

ABC MAGICO TORO M035 POLL

ABC EDMUND LATIN E347

ABC EDLA HILSONA J820

ABC MAX ATORA C233

ABC KNUT K532 POLL

ABC MAGICO TORO M035 POLL

ABC EDLA HILSONA J820

ABC MAJA MACKIE T020 POLL

ABC NILARIO N398

ABC NILARIA MACKIE R414

ABC MACKIE B226 POLL

REFERENCE SIRE Y153**ABC YNOCENCIO Y153**

Birth Date: 3/22/2011

M 814859

BW	Act. WW	205 Wt	NI	Gain	Index	WDA	Index	YW Wt	Scr
98	780	797	117	4.13	112	4.00	118	1425	37

EPDS:	BW	WW	YW	Milk	Mat.	Total Sire Index
	2.8	38	64	-6	13	201.43 35%

ABC LOTHARIO L146 POLL

ABC NIKETORO N197 POLL

ABC MONA NIKE H071

ABC TESORO T211 POLL

ABC JACOB J550 SCURS

ABC JACOBA ROSALINA N192 POLL

ABC GUIA ROSALINA J261 POLL

ABC HILARIO ED B90

ABC JILARIO J195

ABC LADY ALITA C97

ABC JILL FERNAUTA P237 (P327)

ABC LATIN FANDINO B162

ABC MONTORA FERNAUT F812

ABC FERNAUT MERE Y977

REFERENCE SIRE Y287**ABC YSIDRO Y287**

Birth Date: 3/21/2011

M 814797

BW	Act. WW	205 Wt	NI	Gain	Index	WDA	Index	YW Wt	Scr
99	708	722	114	3.89	105	3.79	112	1315	42

EPDS:	BW	WW	YW	Milk	Mat.	Total Sire Index
	2.6	42	56	-7.6	21	187.83 65%

ABC ULTRO MAC H34 POLL

ABC METEOR M303 POLL

ABC DANA LEDERITA G642

ABC BERNICIO P084

ABC LATORO MAX G241

ABC LAMAXA LAHILTA L738

ABC LATIGA HILCITA E779

ABC LORATIO L426

ABC NATORO N043

ABC LATORA ZORNIKOMA J856

ABC NICOLINA MACREYA S799 POLL

ABC HILTON H310 SCURS

ABC HILITA MAHERNA K574 POLL

ABC MISS MAC 735V POLL

REFERENCE SIRE Z018 ABC ZACATECAS Z018 POLL
 Birth Date: 2/26/2012 M 836559

BW	Act. WW	205 Wt	NI	Gain	Index	WDA	Index	YW Wt	Scr
90	712	717	GRFT	3.75	106	3.40	100	1290	36

EPDS:	BW	WW	YW	Milk	Mat.	Total Sire Index
	2.8	49	100	1	25	238.03 1%

ABC KNUT K532 POLL
 ABC MAGICO TORO M035 POLL
 ABC EDLA HILSONA J820

ABC XERXES X018 POLL
 ABC MAGICO TORO M035 POLL
 ABC MAJA MACKIE T020 POLL
 ABC NILARIA MACKIE R414

ABC KNUT K532 POLL
 ABC RENOMBRE R142 POLL
 ABC GERA LAHERNA K806

ABC RENOMBRE FRANCESA X148
 ABC LATORO ULYSSES E352
 ABC LASS FRANZ L359
 ABC MISS FRANZ A066

REFERENCE SIRE Z104 ABC ZACARIAS Z104
 Birth Date: 3/19/2012 M 836562

BW	Act. WW	205 Wt	NI	Gain	Index	WDA	Index	YW Wt	Scr
90	736	742	108	4.05	114	3.81	111	1360	44

EPDS:	BW	WW	YW	Milk	Mat.	Total Sire Index
	1.3	27	70	3	16	214.53 15%

ABC LOTHARIO L146 POLL
 ABC NIKETORO N197 POLL
 ABC MONA NIKE H071

ABC TESORO T211 POLL
 ABC JACOB J550 SCURS
 ABC JACOBA ROSALINA N192 POLL
 ABC GUIA ROSALINA J261 POLL

ABC LATORO ATORO D398
 ABC KORO K493
 ABC FANA HERNA D334

ABC KORA JACKIE N229
 SDC SIR MONTE DBL MAC X18 POLL
 ABC MACKIE B226 POLL
 ABC VECTORO JACKIE Y217

REFERENCE SIRE Z128 ABC ZEBEDEO Z128
 Birth Date: 3/21/2012 M 836563

BW	Act. WW	205 Wt	NI	Gain	Index	WDA	Index	YW Wt	Scr
89	718	731	106	3.45	98	3.52	103	1250	41

EPDS:	BW	WW	YW	Milk	Mat.	Total Sire Index
	0.6	23	52	8	-1.8	189.05 65%

ABC RAFAEL R246 SCURS
 ABC ULTIMO LATINO U042 POLL
 ABC KARLA MACALIBURA R870 SCURS

ABC EXHIBICION X138 POLL
 ABC PADRINOLARIO P333
 ABC PROSPERA ELSARITA T837
 ABC GONDA GALRITA L10

ABC LATORO MONTE A250
 ABC HERNANDO H470
 ABC FERN MAC 834X

ABC HERNA HERCULA M071
 ABC HORATIO GENE G53
 ABC HERGENA JACKIE K045
 ABC LATORA PRINCESA F069

REFERENCE SIRE Z166 ABC ZODIACO Z166
 Birth Date: 3/25/2012 M 836564

BW	Act. WW	205 Wt	NI	Gain	Index	WDA	Index	YW Wt	Scr
101	712	737	107	4.11	116	3.83	112	1345	37

EPDS:	BW	WW	YW	Milk	Mat.	Total Sire Index
	4.5	34	70	2	19	207.93 25%

ABC ULTRO MAC H134 POLL
 ABC METEOR M303 POLL
 ABC DANA LEDERITA G642

ABC BERNICIO P084
 ABC LATORO MAX G241
 ABC LAMAX LAHILTA L738
 ABC LATIGA HILCITA E779

ABC ULTRO GUIDO G092 POLL
 ABC LANZA L161 POLL
 ABC ZANAMACDANTE E128

ABC LANZA BABERNICE P737
 ABC HILTON H31 SCURS
 ABC HILTONA BERNICE K364 POLL
 ABC LARA BABE D148

REFERENCE SIRE Z182 ABC EL ZUMO Z182
 Birth Date: 3/27/2012 M 841649

BW	Act. WW	205 Wt	NI	Gain	Index	WDA	Index	YW Wt	Scr
92	682	717	104	3.36	95	3.44	101	1200	35

EPDS:	BW	WW	YW	Milk	Mat.	Total Sire Index
	0.3	6	27	11	14	173.84 90%

ABC KNUT K532 POLL
 ABC RENOMBRE R142 POLL
 ABC GERA LAHERNA K806

ABC UNIDAD U080
 ABC KORO K493
 ABC KORA JACKIE N229
 ABC MACKIE B226

ABC LOTHARIO L146 POLL
 ABC NIKETORO N197 POLL
 ABC MONA NIKE H071

ABC NIKTORA BELLE S286
 ABC DAN D360 POLL
 ABC DANA H208
 ABC ZANA SAMIDEAL E174 POLL

ADDITIONAL REFERENCE SIRES

REFERENCE SIRE **B042** **ABC EL BELLO B042**

AICA REG. NO.: M 860610 BIRTHDATE: 3/4/2014

ABC EL ZUMO Z182

ABC EL BELLO B042

ABC TIRADORA MACDARTE Z100

BW	Act. WW	205 Wt	NI	Gain	Index	WDA	Index	YW Wt	Scr
99	564	685	96	4.91	136	3.95	113	1345	36

EPDS:	BW	WW	YW	Milk	Mat.	Total Sire Index
	2.3	21	55	15	26	195.11 50%

REFERENCE SIRE **B077** **ABC EL BOLSO B077**

AICA REG. NO.: M 860611 BIRTHDATE: 3/10/2014

ABC YOEL Y214

ABC EL BOLSO B077

ABC RAFAEL FRANCESCA U854

BW	Act. WW	205 Wt	NI	Gain	Index	WDA	Index	YW Wt	Scr
94	766	747	106	4.06	112	3.81	110	1400	35

EPDS:	BW	WW	YW	Milk	Mat.	Total Sire Index
	2.9	32	71	-1	15	209.52 20%

REFERENCE SIRE **B273** **ABC BRIOSO B273**

AICA REG. NO.: M 860612 BIRTHDATE: 3/28/2014

ABC YSIDRO Y287

ABC BRIOSO B273

ABC SUBIDA LACYFAY U239

BW	Act. WW	205 Wt	NI	Gain	Index	WDA	Index	YW Wt	Scr
93	786	829	117	3.78	104	3.94	113	1431	48

EPDS:	BW	WW	YW	Milk	Mat.	Total Sire Index
	2.3	47	73	2	25	205.26 30%

**Feeder heifers 10-24-14 averaging 653 lbs. from the Anderson Ranches of Raynesford and Monarch, MT:
Mrs. Jean Anderson, Rob and Laurie Anderson, Emil and Kay Anderson**



Stout feeder heifers 10/16/14 are from Diamond Willow Ranch, James & DaRae Larson family of Belt, MT

ADDITIONAL REFERENCE SIRES

REFERENCE SIRE **M35**

ABC MAGICO TORO M35 POLL

AICA REG. NO.: M 660303 BIRTHDATE: 3/4/2002

ABC KNUT K532 POLL

ABC MAGICO TORO M35 POLL

ABC EDLA HILSONA J820

BW	Act. WW	205 Wt	NI	Gain	Index	WDA	Index	YW Wt	Scr
90	720	724	112	4.47	117	3.71	108	1395	39

EPDS:	BW	WW	YW	Milk	Mat.	Total Sire Index
	1.2	30	70	7	22	207.69 25%

REFERENCE SIRE **S168**

ABC SEGURO S168

AICA REG. NO.: M 751500 BIRTHDATE: 3/22/2006

ABC NIKETORO N197 POLL

ABC SEGURO S168

ABC KANA SHARON M467

BW	Act. WW	205 Wt	NI	Gain	Index	WDA	Index	YW Wt	Scr
93	566	683	95	3.40	99	3.39	99	1195	37

EPDS:	BW	WW	YW	Milk	Mat.	Total Sire Index
	2.0	23	49	4	16	186.83 70%

REFERENCE SIRE **X082**

ABC XENON X082 POLL

AICA REG. NO.: M 810108 BIRTHDATE: 3/12/2010

ABC MAGICO TORO M35 POLL

ABC XENON X082 POLL

ABC SEGURA DINALISA U280

BW	Act. WW	205 Wt	NI	Gain	Index	WDA	Index	YW Wt	Scr
98	680	729	105	4.29	127	3.70	111	1350	37

EPDS:	BW	WW	YW	Milk	Mat.	Total Sire Index
	2.3	34	78	2	19	216.63 15%



FEEDER HEIFERS OFF STOCKERS OCT. 2007

WEISNER RANCH, AUGUST, MT



COBB CHAROLAIS 2017 SPRING SALE QUICK REFERENCE SHEET

P=Poll SC=Scur *= retain 1/4 interest

Sale Tag	P/S	Dam	Sire	Calf Tattoo	Birth Date	Birth Act Wt	Wean Act Wt	205 Adj Wt	Herd Index	Final Test Wt 3/7/17	Test Gain	153 Day Test Index 100=3.47	WDA Gain	WDA Index 100=3.40	Fertility Scrotal (cm) 3/14/17
1		Z423	A047	D261	3/21/16	102	818	863	123	1470	4.26	123	4.19	123	39
2		P784	A424	D467	4/18/16	88	692	819	117	1330	4.17	120	4.12	121	35
3		W467	A424	D292	3/24/16	98	826	863	123	1395	3.72	107	4.01	118	35
4		W306	A058	D157	3/14/16	102	868	868	124	1410	3.54	102	3.94	116	39
5		X213	A424	D394	4/5/16	97	774	855	122	1320	3.57	103	3.93	116	40
6	*	W865	X853	D453	4/15/16	99	636	734	105	1275	4.18	120	3.91	115	34
7	*	B075	X018	D043	2/29/16	103	856	869	134	1450	3.88	112	3.90	115	38
8		Z238	Z166	D410	4/7/16	90	648	742	106	1295	4.23	122	3.88	114	33
9	SC	Y441	A424	D447	4/13/16	101	686	785	112	1270	3.82	110	3.87	114	35
10	P	Y309WF	Y287	D152	3/12/16	101	798	791	113	1385	3.84	111	3.85	113	45
11		W804	Z166	D146	3/13/16	101	766	763	109	1375	3.98	115	3.83	113	43
12		Y239	A424	D460	4/17/16	101	692	808	115	1240	3.58	103	3.83	113	38
13		Z055	Y153	D375	4/3/16	88	688	773	110	1285	3.90	112	3.80	112	38
14	SC	T808	Z166	D101A	3/10/16	101	738	726	104	1375	4.16	120	3.80	112	39
15	*	X889	Y287	D180	3/15/16	100	660	663	95	1350	4.51	130	3.78	111	39
16		T815	A047	D289	3/24/16	98	760	794	113	1315	3.63	105	3.78	111	39
17	P*	W198	B273	D290	3/24/16	101	780	814	116	1310	3.46	100	3.76	111	45
18	P	A683	Z018	D094	3/8/16	103	752	794	123	1370	4.04	116	3.76	111	39
19		A431	Y214	D429	4/10/16	94	572	685	98	1245	4.40	127	3.76	111	36
20		X803	A047	D205	3/17/16	98	778	788	113	1335	3.64	105	3.76	111	35
21		U024	Z104	D386	4/4/16	99	646	708	101	1265	4.05	117	3.75	110	38
22		W836	A047	D272	3/22/16	101	728	753	108	1310	3.80	110	3.74	110	34
23		P100WF	A424	D147	3/14/16	97	768	771	110	1335	3.71	107	3.73	110	39
24		W834	Z104	D331	3/27/16	93	716	758	108	1285	3.72	107	3.72	110	43
25		X243	A047	D359	3/31/16	100	714	769	110	1270	3.63	105	3.72	110	35
26		A250	B273	D382	4/4/16	85	660	766	109	1255	3.89	112	3.72	110	35
27		U089	A008	D333	3/28/16	98	678	721	103	1280	3.93	113	3.72	109	39
28		S789	Y287	D366	4/2/16	95	646	702	100	1260	4.01	116	3.72	109	37
29		Z100	Z182	D444	4/12/16	92	636	746	107	1220	3.82	110	3.71	109	34
30		U112	Y153	D319	3/26/16	97	682	718	103	1275	3.88	112	3.68	108	34
31	SC	U854	A424	D101B	3/9/16	85 76	764	748	107	1335	3.73	108	3.68	108	37
32		W899	B274	D353	3/31/16	86	646	697	100	1250	3.95	114	3.67	108	33
33		T126	Z182	D456	4/15/16	90	702	815	116	1195	3.22	93	3.67	108	37
34		Z135	Z104	D387	4/4/16	98	670	755	108	1230	3.66	105	3.65	107	37
35		R192	Z166	D275	3/22/16	102	734	762	109	1275	3.54	102	3.64	107	38
36	*	Y197	A047	D191	3/16/16	90	748	754	108	1295	3.58	103	3.64	107	37
37		Y810	X853	D415	4/8/16	96	646	742	106	1210	3.69	106	3.63	107	33
38		T812	X853	D396	4/5/16	95	704	777	111	1220	3.37	97	3.63	107	31
39		X135	Y287	D393	4/5/16	102	790	872	125	1220	2.81	81	3.63	107	38
40		U396	A424	D125	3/11/16	96	684	676	97	1310	4.09	118	3.63	107	39
41		Y227	A008	D347	3/29/16	90	750	802	115	1240	3.20	92	3.62	106	33
42		W820	A424	D242	3/19/16	98	674	726	104	1275	3.93	113	3.61	106	33
43		Y142	Y287	D121	3/12/16	98	762	756	108	1300	3.52	101	3.61	106	39
44		S128	Z104	D281	3/23/16	102	738	767	110	1260	3.41	98	3.61	106	46
45		U500	Y153	D419	4/8/16	95	630	704	101	1200	3.73	107	3.60	106	36
46		U101	A008	D178A	3/15/16	97	752	755	108	1285	3.48	100	3.60	106	38
47		W860	Y287	D141	3/14/16	101	750	750	107	1280	3.46	100	3.58	105	39
48		W841	A424	DNO TAT2	3/7/16	95	822	798	114	1300	3.12	90	3.56	105	40
49		N220	A424	D379	4/4/16	95	670	739	106	1200	3.46	100	3.56	105	38

COBB CHAROLAIS 2017 SPRING SALE ULTRASOUND DATA

MARCH 5 AND MARCH 6, 2017

Sale Tag	DAM NO	CALF NO	Rib Fat (in)	Rib Fat Adj	REA (in SQ)	REA Adj	IMF %	IMF Adj
1	Z423	D261	0.13	0.13	16.90	17.12	1.74	1.78
2	P784	D467	0.14	0.15	14.00	14.62	1.74	1.64
3	W467	D292	0.19	0.20	15.10	15.37	1.68	1.72
4	W306	D157	0.1	0.10	15.20	15.33	1.68	1.7
5	X213	D394	0.14	0.15	14.00	14.43	2.15	2.22
6	W865	D453	0.08	0.09	16.10	16.68	1.94	2.03
7	B075	D043	0.13	0.13	14.50	14.43	2.35	2.34
8	Z238	D410	0.12	0.13	16.90	17.36	1.73	1.81
9	Y441	D447	0.12	0.13	14.10	14.65	1.91	2
10	Y309WF	D152	0.1	0.10	14.90	15.00	2.63	2.65
11	W804	D146	0.11	0.11	15.10	15.21	1.83	1.85
12	Y239	D460	0.12	0.13	14.10	14.70	1.64	1.74
13	Z055	D375	0.15	0.16	16.70	17.11	1.81	1.88
14	T808	D101A	0.11	0.11	14.70	14.77	1.78	1.79
15	X889	D180	0.12	0.12	16.80	16.94	2.62	2.64
16	T815	D289	0.09	0.10	15.20	15.47	1.99	2.03
17	W198	D290	0.08	0.09	16.90	17.17	2.52	2.56
18	A683	D094	0.1	0.10	15.70	15.74	1.72	1.73
19	A431	D429	0.12	0.13	16.60	17.09	1.82	1.9
20	X803	D205	0.11	0.11	16.30	16.47	1.82	1.85
21	U024	D386	0.07	0.08	13.10	14.51	1.95	2.02
22	W836	D272	0.07	0.07	15.70	15.94	1.78	1.82
23	P100WF	D147	0.11	0.11	12.70	12.81	1.68	1.7
24	W834	D331	0.15	0.16	15.20	15.51	2.26	2.31
25	X243	D359	0.1	0.11	13.80	14.15	1.95	2.01
26	A250	D382	0.09	0.10	13.50	13.92	1.85	1.92
27	U089	D333	0.08	0.09	13.50	13.82	1.63	1.68
28	S789	D366	0.11	0.12	13.60	13.99	2.75	2.81
29	Z100	D444	0.11	0.12	13.80	14.32	2.34	2.43
30	U112	D319	0.15	0.16	15.90	16.19	2.21	2.26
31	U854	D101B	0.09	0.09	15.60	15.80	1.66	1.69
32	W899	D353	0.11	0.12	14.70	15.06	2.11	2.17
33	T126	D456	0.12	0.13	12.20	12.78	2.07	2.16
34	Z135	D387	0.17	0.18	13.70	14.11	2.08	2.15
35	R192	D275	0.1	0.10	14.90	15.12	1.91	1.95
36	Y197	D191	0.07	0.07	16.10	16.25	2.14	2.17
37	Y810	D415	0.15	0.16	15.90	16.36	2.35	2.43
38	T812	D396	0.15	0.16	14.80	15.22	2.24	2.31
39	X135	D393	0.08	0.09	13.30	13.72	1.83	1.9
40	U396	D125	0.11	0.11	13.40	13.48	2.91	2.92
41	Y227	D347	0.11	0.12	15.10	15.44	1.99	2.05
42	W820	D242	0.13	0.13	13.90	14.10	1.90	1.93
43	Y142	D121	0.11	0.11	13.60	13.70	1.93	1.95
44	S128	D281	0.1	0.10	13.50	13.74	1.80	1.84
45	U500	D419	0.1	0.11	14.60	15.08	1.91	1.99
46	U101	D178A	0.11	0.11	14.90	15.04	2.15	2.17
47	W860	D141	0.05	0.05	15.90	16.03	1.66	1.68
48	W841	DNO TAT2	0.12	0.12	16.70	16.73	1.94	1.94
49	N220	D379	0.13	0.14	14.00	14.42	1.92	1.99

COBB CHAROLAIS 2017 SPRING SALE QUICK REFERENCE SHEET

P=Poll SC=Scur *= retain 1/4 interest

Sale Tag	P/S	Dam	Sire	Calf Tattoo	Birth Date	Birth Act Wt	Wean Act Wt	205 Adj Wt	Herd Index	Final Test Wt 3/7/17	Test Gain	153 Day Test Index 100=3.47	WDA Gain	WDA Index 100=3.40	Fertility Scrotal (cm) 3/14/17
50		X383	A047	D168	3/15/16	94	634	637	91	1270	4.16	120	3.56	105	38
51		X124	A008	D114	3/10/16	80	724	712	102	1285	3.67	106	3.55	104	36
52	SC	W886	Z182	D463	4/17/16	98	700	820	117	1150	2.94	85	3.55	104	36
53		X841	Z104	D297	3/24/16	101	664	692	99	1235	3.73	108	3.55	104	35
54		Y861	A047	D407	4/7/16	98	684	781	112	1185	3.27	94	3.55	104	37
55		T867	Z166	D273	3/23/16	97	758	788	113	1235	3.12	90	3.54	104	30
56		X261	X853	D259A	3/21/16	95	650	670	96	1240	3.86	111	3.53	104	36
57		N229	X853	D219	3/18/16	97	720	735	105	1250	3.46	100	3.53	104	37
58		X827	A424	D318	3/26/16	98	744	784	112	1220	3.11	90	3.53	104	32
59	SC	W324	Z104	D325	3/27/16	96	680	720	103	1215	3.50	101	3.52	104	35
60		X832	Z104	D305	3/24/16	92	700	731	104	1220	3.40	98	3.51	103	38
61		B119	X018	D037	2/27/16	85	632	652	101	1305	4.40	127	3.49	103	36
62		S876	Y153	D317	3/26/16	99	642	676	97	1205	3.68	106	3.48	102	36
63	P	A646	M035	D057	3/3/16	100	728	756	117	1285	3.64	105	3.48	102	39
64		P338	A008	D227	3/18/16	90	708	723	103	1230	3.41	98	3.47	102	38
65		Z475	A047	D236	3/19/16	99	628	661	94	1225	3.90	112	3.47	102	33
66		T191	A047	D077	3/7/16	100	668	649	93	1260	3.87	112	3.45	102	35
67		B010	X018	D014	2/24/16	97	708	717	111	1300	3.87	112	3.45	101	39
68		A183	Y214	D220	3/18/16	88	674	726	104	1220	3.57	103	3.45	101	41
69		U236	A008	D160	3/14/16	90	718	718	103	1230	3.35	96	3.44	101	36
70		W167	Z182	D395	4/6/16	99	658	728	104	1150	3.22	93	3.43	101	35
71		B212	Z182	D096	3/9/16	95	668	714	110	1245	3.77	109	3.43	101	37
72	P	W854#143	A372	D062	3/3/16	96	786	751	107	1265	3.13	90	3.43	101	38
73		A187	Y214	D154	3/14/16	70	668	708	graft	1220	3.61	104	3.41	100	33
74		A412	B077	D074	3/5/16	97	680	696	99	1250	3.73	107	3.41	100	32
75		U377	B274	D327	3/27/16	96	688	728	104	1175	3.18	92	3.41	100	38
76		A194	Y214	D402	4/6/16	88	620	727	104	1140	3.40	98	3.40	100	33
77		X318	A058	D240	3/19/16	97	686	701	100	1200	3.36	97	3.40	100	36
78	SC	U111	A372	D049A	3/1/16	95	874	828	118	1260	2.52	73	3.40	100	38
79	P	Z403	Z018	D392	4/5/16	87	708	803	115	1140	2.82	81	3.39	100	33
80		S765	Z182	D409	4/7/16	100	654	726	104	1130	3.11	90	3.38	100	34
81		W249	A058	D249	3/20/16	97	668	685	98	1190	3.41	98	3.38	99	34
82		A097	Y214	D438	4/11/16	95	568	683	98	1115	3.58	103	3.38	99	31
83		Z245	Y287	D271	3/22/16	99	698	725	104	1180	3.15	91	3.37	99	40
84		M049	A424	D448	4/13/16	88	564	649	93	1105	3.54	102	3.37	99	36
85	P	Z844	X082	D362	4/1/16	88	624	716	102	1145	3.41	98	3.37	99	38
86		A154	Y214	D414	4/8/16	100	538	638	91	1120	3.80	110	3.36	99	33
87		S745	X853	D130	3/12/16	99	734	728	graft	1210	3.11	90	3.36	99	34
88		Z809	X082	D442	4/12/16	86	628	757	108	1105	3.12	90	3.36	99	31
89		W269	Y287	D307	3/25/16	90	688	722	103	1165	3.12	90	3.36	99	37
90		R359	A424	D435	4/10/16	85	576	653	93	1110	3.49	101	3.35	99	35
91		A638	Z182	D095	3/9/16	83	714	759	117	1215	3.27	94	3.35	98	41
92		Z082	Y153	D237	3/19/16	90	628	661	94	1180	3.61	104	3.34	98	35
93		P101	B274	D155	3/14/16	80	654	657	94	1195	3.54	102	3.34	98	38
94	P	T006	Z166	D367	4/2/16	82	654	712	102	1130	3.11	90	3.33	98	32
95		W814	Z104	D070	3/5/16	93	698	673	96	1220	3.41	98	3.32	98	37
96		P365	Z166	D166	3/15/16	102	628	634	91	1185	3.64	105	3.32	98	34
97		A670	M035	D284	3/24/16	85	618	705	109	1155	3.51	101	3.32	98	39
98		X023	B274	D239	3/19/16	95	588	600	graft	1170	3.80	110	3.31	97	36

COBB CHAROLAIS 2017 SPRING SALE ULTRASOUND DATA

MARCH 5 AND MARCH 6, 2017

Sale Tag	DAM NO	CALF NO	Rib Fat (in)	Rib Fat Adj	REA (in SQ)	REA Adj	IMF %	IMF Adj
50	X383	D168	0.11	0.11	16.20	16.34	1.97	1.99
51	X124	D114	0.16	0.16	14.40	14.47	1.97	1.98
52	W886	D463	0.11	0.12	14.80	15.40	3.44	3.54
53	X841	D297	0.07	0.08	13.80	14.05	2.12	2.16
54	Y861	D407	0.07	0.08	14.10	14.55	1.87	1.94
55	T867	D273	0.07	0.08	12.40	12.65	2.46	2.5
56	X261	D259A	0.11		16.00		2.36	
57	N229	D219	0.1	0.10	14.40	14.58	2.15	2.18
58	X827	D318	0.14	0.15	14.90	15.19	2.26	2.31
59	W324	D325	0.11	0.12	11.30	11.61	1.93	1.98
60	X832	D305	0.11	0.12	13.00	13.27	1.79	1.83
61	B119	D037	0.09	0.09	16.30	16.19	1.82	1.8
62	S876	D317	0.13	0.14	14.20	14.49	1.84	1.89
63	A646	D057	0.08	0.08	13.40	13.36	2.11	2.10
64	P338	D227	0.06	0.06	16.50	16.68	1.64	1.67
65	Z475	D236	0.06		14.30		2.16	
66	T191	D077	0.11	0.11	14.50	14.53	2.28	2.28
67	B010	D014	0.09	0.09	14.90	14.76	2.37	2.35
68	A183	D220	0.16	0.16	15.50	15.68	1.77	1.8
69	U236	D160	0.22	0.22	13.20	13.31	2.21	2.23
70	W167	D395	0.16	0.17	13.60	14.05	1.91	1.98
71	B212	D096	0.11	0.11	14.20	14.24	2.05	2.06
72	W854/#143	D062	0.07	0.07	a4.2	a4.17	1.77	1.77
73	A187	D154	0.12	0.12	12.80	12.91	2.17	2.19
74	A412	D074	0.06	0.06	12.80	12.80	1.71	1.71
75	U377	D327	0.09	0.10	13.30	13.59	1.73	1.78
76	A194	D402	0.10	0.11	12.80	13.23	1.87	1.94
77	X318	D240	0.1	0.10	15.70	15.66	1.80	1.83
78	U111	D049A	0.1	0.10	14.60	14.54	2.03	2.02
79	Z403	D392	0.10	0.11	11.10	11.52	1.77	1.84
80	S765	D409	0.08	0.09	12.10	12.55	1.9	1.97
81	W249	D249	0.13	0.13	14.20	14.40	2.26	2.29
82	A097	D438	0.09	0.10	11.70	12.21	1.86	1.94
83	Z245	D271	0.1	0.10	14.40	14.64	2.62	2.66
84	M049	D448	0.12	0.13	13.40	13.93	1.82	1.91
85	Z844	D362	0.07	0.08	13.10	13.46	1.83	1.89
86	A154	D414	0.07	0.08	15.40	15.86	1.64	1.72
87	S745	D130	0.1	0.10	17.10	17.20	2.55	2.57
88	Z809	D442	0.07	0.08	10.30	10.82	1.97	2.06
89	W269	D307	0.15	0.16	13.70	13.97	1.67	1.71
90	R359	D435	0.12	0.13	14.20	14.69	2.12	2.20
91	A638	D095	0.1	0.10	12.30	12.36	1.71	1.72
92	Z082	D237	0.07	0.07	12.50	12.70	1.69	1.72
93	P101	D155	0.15	0.15	13.30	13.41	2.59	2.61
94	T006	D367	0.11	0.12	12.40	12.78	2.55	2.61
95	W814	D070	0.11	0.11	14.20	14.19	2.19	2.19
96	P365	D166	0.12	0.12	15.10	15.24	1.85	1.87
97	A670	D284	0.09	0.10	13.40	13.65	2.18	2.22
98	X023	D239	0.12	0.12	13.20	13.38	2.20	2.23

COBB CHAROLAIS 2017 SPRING SALE QUICK REFERENCE SHEET

P=Poll SC=Scur *= retain 1/4 interest

Sale Tag	P/S	Dam	Sire	Calf Tattoo	Birth Date	Birth Act Wt	Wean Act Wt	205 Adj Wt	Herd Index	Final Test Wt 3/7/17	Test Gain	153 Day Test Index 100=3.47	WDA Gain	WDA Index 100=3.40	Fertility Scrotal (cm) 3/14/17
99		Y811	A047	D303	3/25/16	95	666	718	103	1150	3.16	91	3.31	97	37
100		U267	Z018	D400	4/7/16	97	626	696	99	1105	3.13	90	3.31	97	36
101		Y832	Z104	D078A	3/6/16	88	712	709	101	1210	3.25	94	3.31	97	39
102	P	A602	M035	D165	3/15/16	87	546	608	94	1180	4.14	119	3.31	97	35
103		P704	X853	D109	3/10/16	101	690	684	98	1195	3.30	95	3.30	97	31
104	P	U033	Y287	D378	4/3/16	88	610	666	95	1115	3.30	95	3.30	97	36
105		S069	Z166	D466A	4/6/16	99	628	694	99	1105	3.12	90	3.30	97	35
106		W314	B042	D135	3/12/16	100	652	647	92	1185	3.48	100	3.29	97	40
107		U257	B274	D175	3/15/16	88	582	663	orphan	1080	3.25	94	3.28	97	33
108	P	X192	Z018	D134	3/12/16	80	652	646	92	1180	3.45	99	3.28	96	34
109	P	X207	Z018	D221	3/18/16	80	616	627	90	1160	3.56	102	3.28	96	34
110		Y297	Y153	D368	4/2/16	88	634	690	99	1110	3.11	90	3.27	96	34
111		Z190	Z166	D150	3/13/16	96	690	707	101	1175	3.17	91	3.27	96	36
112		B044	X018	D026	2/26/16	93	616	636	98	1225	3.98	115	3.27	96	35
113	SC	S747	A047	D310	3/26/16	98	734	773	110	1130	2.59	75	3.27	96	33
114		B245	Z128	D016	2/24/16	80	664	674	104	1230	3.70	107	3.26	96	35
115	P	A645	M035	D048	3/2/16	97	720	746	115	1205	3.17	91	3.26	96	37
116	P	X276	Y214	D124	3/11/16	87	698	689	98	1175	3.12	90	3.25	96	33
117		X277	B274	D137	3/12/16	86	718	712	102	1170	2.95	85	3.25	96	35
118		Y802	X853	D283	3/25/16	101	646	696	99	1125	3.13	90	3.24	95	31
119	P	R014	X853	D127	3/11/16	82	690	684	98	1170	3.14	90	3.24	95	35
120		B199	Z182	D216	3/18/16	99	578	648	100	1145	3.71	107	3.23	95	37
121		A225	Y214	D384	4/4/16	87	535	626	89	1090	3.63	105	3.23	95	32
122		U277	Z018	D329	3/27/16	90	712	754	108	1115	2.63	76	3.23	95	36
123	P	A631	M035	D217	3/19/16	90	680	755	117	1140	3.01	87	3.23	95	36
124		R089	Y153	D218	3/18/16	100	696	711	102	1140	2.90	84	3.22	95	34
125		A257	Y214	D381	4/4/16	99	592	688	98	1080	3.19	92	3.20	94	38
126		Z205	A008	D187	3/16/16	98	592	617	90	1135	3.55	102	3.19	94	39
127	P	P310	Y153	D003	2/9/16	102	766	676	97	1245	3.13	90	3.18	93	36
128		Y831	A047	D296	3/24/16	70	592	639	91	1105	3.35	97	3.18	93	36
129		A022	B077	D132	3/9/16	75	554	583	graft	1195	4.19	121	3.29	93	36
130		T063	A424	D360	4/1/16	92	523	564	graft	1075	3.61	104	3.16	93	32
131	P	N328	Z018	D145	3/13/16	88	676	676	97	1130	2.97	86	3.15	93	32
132		Z103	A372	D136	3/12/16	100	652	646	92	1130	3.12	90	3.14	92	33
133		B190	S168	D029	2/27/16	98	672	690	107	1170	3.25	94	3.13	92	34
134	SC	A092	B273	D328	3/27/16	90	598	672	96	1075	3.12	90	3.12	92	34
135		T806	A058	D364	4/2/16	78	468	508	orphan	1050	3.80	110	3.10	91	32
136	P	Y016	Z018	D151	3/13/16	88	578	576	graft	1110	3.48	100	3.09	91	33
137		B138	Z018	D423	3/9/16	85	552	601	93	1120	3.71	107	3.09	91	34
138		B097	S168	D038	2/28/16	98	624	648	100	1150	3.44	99	3.08	91	35
139	P	B379	Z128	D041	2/29/16	81	570	599	93	1140	3.73	107	3.06	90	31
140		B188	Z182	D004	2/19/16	89	626	630	97	1170	3.56	102	3.06	90	33
141		W201	Z104	D210	3/17/16	84	604	612	90	1085	3.14	91	3.06	90	36
142		B082	X018	D033	2/28/16	93	580	607	94	1140	3.66	105	3.06	90	35
143		B099	Z182	D025	2/26/16	98	588	610	94	1145	3.64	105	3.05	90	34
144		B298	Y072	D024	2/26/16	96	568	592	92	1145	3.77	109	3.05	90	35
145	P	B156	Z182	D275A	3/23/16	89	538	619	96	1065	3.44	99	3.05	90	31
146	P	P395	Y153	D128	3/11/16	86	574	570	graft	1100	3.44	99	3.05	90	33
147		B338	Z128	D059	3/4/16	98	614	650	100	1120	3.31	95	3.04	90	36

COBB CHAROLAIS 2017 SPRING SALE ULTRASOUND DATA

MARCH 5 AND MARCH 6, 2017

Sale Tag	DAM NO	CALF NO	Rib Fat (in)	Rib Fat Adj	REA (in SQ)	REA Adj	IMF %	IMF Adj
99	Y811	D303	0.1	0.11	13.90	14.17	1.63	1.67
100	U267	D400	0.08	0.09	13.10	13.55	2.58	2.65
101	Y832	D078A	0.07	0.07	13.30	13.30	1.87	1.87
102	A602	D165	0.11	0.10	13.70	13.83	2.11	2.23
103	P704	D109	0.07		15.70		1.81	
104	U033	D378	0.09	0.10	13.30	13.69	2.77	2.83
105	S069	D466A	0.08	0.09	11.20	11.63	1.83	1.90
106	W314	D135	0.11	0.11	14.30	14.38	1.97	1.98
107	U257	D175	0.1	0.10	14.40	14.53	1.98	2
108	X192	D134	0.12	0.12	14.60	14.68	1.93	1.94
109	X207	D221	0.15	0.15	15.10	15.27	1.81	1.84
110	Y297	D368	0.07	0.08	12.60	12.98	2.09	2.15
111	Z190	D150	0.07	0.07	12.90	13.00	1.75	1.77
112	B044	D026	0.08	0.08	17.80	17.67	1.72	1.7
113	S747	D310	0.07	0.08	13.70	13.98	2.18	2.23
114	B245	D016	0.11		14.20		1.67	
115	A645	D048	0.1	0.10	15.00	14.94	1.78	1.77
116	X276	D124	0.11	0.11	14.50	14.58	2.30	2.31
117	X277	D137	0.07	0.07	14.20	14.30	1.69	1.71
118	Y802	D283	0.08	0.09	14.40	14.68	1.74	1.79
119	R014	D127	0.11	0.11	15.90	15.98	2.17	2.18
120	B199	D216	0.10	0.10	12.60	12.77	1.77	1.80
121	A225	D384	0.09	0.10	13.50	13.91	1.74	1.81
122	U277	D329	0.09	0.10	13.60	13.89	2.20	2.25
123	A631	D217	0.11	0.11	12.70	12.88	2.64	2.67
124	R089	D218	0.07	0.07	13.60	13.77	2.07	2.10
125	A257	D381	0.07	0.08	15.40	15.81	2.06	2.13
126	Z205	D187	0.07	0.07	12.30	12.44	1.99	2.01
127	P310	D003	0.18	0.17	13.90	13.55	2.86	2.8
128	Y831	D296	0.11	0.12	13.10	13.35	1.87	1.91
129	A022	D132	0.13	0.13	14.00	14.04	2.62	2.63
130	T063	D360	0.12	0.13	15.60	15.96	2	2.06
131	N328	D145	0.13	0.13	15.40	15.50	1.71	1.73
132	Z103	D136	0.05	0.05	11.60	11.68	1.91	1.92
133	B190	D029	0.17	0.17	14.50	14.39	2.56	2.54
134	A092	D328	0.07	0.08	11.00	11.29	2.61	2.66
135	T806	D364	0.13	0.14	12.30	12.68	1.98	2.04
136	Y016	D151	0.08	0.08	12.10	12.20	1.9	1.92
137	B138	D423	0.10	0.10	12.40	12.44	1.7	1.71
138	B097	D038	0.06	0.06	13.60	13.50	1.86	1.84
139	B379	D041	0.08	0.08	12.20	12.12	2.07	2.06
140	B188	D004	0.07	0.07	12.80	12.58	1.7	1.66
141	W201	D210	0.09	0.09	12.80	12.95	1.9	1.93
142	B082	D033	0.09	0.09	12.60	12.50	2.07	2.05
143	B099	D025	0.10	0.10	14.60	14.47	2.22	2.20
144	B298	D024	0.09	0.09	14.70	14.57	2.64	2.62
145	B156	D275A	0.10	0.10	14.00	14.24	2.4	2.44
146	P395	D128	0.11	0.11	14.30	14.37	2.28	2.29
147	B338	D059	0.13	0.13	13.60	13.57	2.39	2.39

Lot 1**TATTOO D 261**

ABC XERXES X018 POLL

ABC ABSOLUTO CLASICO A047 M842744

ABC TESORA KNUT KATLARGA X889

D 261

ABC EXHIBICION X138 POLL

ABC EXHIBICION MACDARTE Z423 F1198677

ABC NIKETORA MACDARTE W159

Dam's Info:

BIRTH DATE	# CLVS	AVG 205 INDEX
4/20/2012	3	114
BIRTH DATE	3/21/16	BIRTH WT 102
ACT W WT	818	
205 ADJ	863	205 INDEX 123
140 ADG	4.26	GAIN INDEX 123
WDA	4.19	WDA INDEX 123
FINAL WT	1470	SCROTUM 39

Lot 2**TATTOO D 467**

ABC YNOCENCIO Y153

ABC AQUILINO A424 M842750

ABC MAJA CRISTALISA S087

D 467

ABC KORO K493

ABC KORA COCHISPA P784 SCURS F1021681

ABC EDLA H218

Dam's Info:

BIRTH DATE	# CLVS	AVG 205 INDEX
9/17/2004	9	119
BIRTH DATE	4/18/16	BIRTH WT 88
ACT W WT	692	
205 ADJ	819	205 INDEX 117
140 ADG	4.17	GAIN INDEX 120
WDA	4.12	WDA INDEX 121
FINAL WT	1330	SCROTUM 35

Lot 3**TATTOO D 292**

ABC YNOCENCIO Y153

ABC AQUILINO A424 M842750

ABC MAJA CRISTALISA S087

D 292

ABC TRIUNFO T314

ABC TRIUNFA PERLISA W467 F1115957

ABC NATORA PERLISA S256

Dam's Info:

BIRTH DATE	# CLVS	AVG 205 INDEX
5/20/2009	5	110
BIRTH DATE	3/24/16	BIRTH WT 98
ACT W WT	826	
205 ADJ	863	205 INDEX 123
140 ADG	3.72	GAIN INDEX 107
WDA	4.01	WDA INDEX 118
FINAL WT	1395	SCROTUM 35

Lot 4**TATTOO D 157**

ABC EXCELENTE X249

ABC ANCHO A058 SCURS M842745

ABC PROSPERA GENACLEO S479

D 157

ABC SALIENTE S263

ABC SALIENTE NAUTYMARIE W306 F1108927

ABC LANZA NAUTYMARIE S273

Dam's Info:

BIRTH DATE	# CLVS	AVG 205 INDEX
4/6/2009	5	108
BIRTH DATE	3/14/16	BIRTH WT 102
ACT W WT	868	
205 ADJ	868	205 INDEX 124
140 ADG	3.54	GAIN INDEX 107
WDA	3.94	WDA INDEX 116
FINAL WT	1410	SCROTUM 39

Lot 5**TATTOO D 394**

ABC YNOCENCIO Y153

ABC AQUILINO A424 M842750

ABC MAJA CRISTALISA S087

D 394

ABC TIRADOR T155 POLL

ABC TIRADORA DANITA X213 F1126138

ABC BENICIA DANITA U089

Dam's Info:

BIRTH DATE	# CLVS	AVG 205 INDEX
3/24/2010	5	110
BIRTH DATE	4/5/16	BIRTH WT 97
ACT W WT	774	
205 ADJ	855	205 INDEX 122
140 ADG	3.57	GAIN INDEX 103
WDA	3.93	WDA INDEX 116
FINAL WT	1320	SCROTUM 40

Lot 6**TATTOO D 453 *RETAIN 1/4 INTEREST**

ABC SALIENTE S263

ABC XALVADOR X853 M814799

ABC KORA ALANA JEAN N787

D 453

ABC TESORO T211 POLL

ABC TESORA CHARZADA W865 F1135365

ABC EDLA CHARZADA J886

Dam's Info:

BIRTH DATE	# CLVS	AVG 205 INDEX
9/4/2009	5	98
BIRTH DATE	4/15/16	BIRTH WT 99
ACT W WT	636	
205 ADJ	734	205 INDEX 105
140 ADG	4.18	GAIN INDEX 120
WDA	3.91	WDA INDEX 115
FINAL WT	1275	SCROTUM 34

Lot 7 TATTOO D 043 **RETAIN ¼ INTEREST

ABC MAGICO TORO M035 POLL

ABC XERXES X018 POLL M810103

ABC MAJA MACKIE T020 POLL

D 043

ABC YNCENDIO Y113 POLL

ABC YNCENDIA CHAZADA B075 F1191001

ABC FATIMA CHAZADA T815

Dam's Info:

BIRTH DATE	# CLVS	AVG 205 INDEX	
3/9/2014	1	134	
BIRTH DATE	2/29/16	BIRTH WT	103
ACT W WT	856		
205 ADJ	869	205 INDEX	134
140 ADG	3.88	GAIN INDEX	112
WDA	3.90	WDA INDEX	115
FINAL WT	1450	SCROTUM	38

Lot 8 TATTOO D 410

ABC BERNICIO P084

ABC ZODIACO Z166 M836564

ABC LANZA BABERNICE P737

D 410

ABC EXPLOSIVO X409

ABC EXPLOSIVA ASTRELICE Z238 F1157860

ABC MAJA ASTRELICE W804

Dam's Info:

BIRTH DATE	# CLVS	AVG 205 INDEX	
4/1/2012	3	100	
BIRTH DATE	4/7/16	BIRTH WT	90
ACT W WT	648		
205 ADJ	742	205 INDEX	106
140 ADG	4.23	GAIN INDEX	122
WDA	3.88	WDA INDEX	114
FINAL WT	1295	SCROTUM	33

Lot 9 TATTOO D 447 SCURS

ABC YNOCENCIO Y153

ABC AQUILINO A424 M842750

ABC MAJA CRISTALISA S087

D 447 SCURS

ABC SALIENTE S263

ABC SALIENTE TRILARA Y441 F1141178

ABC MAJA TRILARA R852 SCURS

Dam's Info:

BIRTH DATE	# CLVS	AVG 205 INDEX	
4/21/2011	4	109	
BIRTH DATE	4/13/16	BIRTH WT	101
ACT W WT	686		
205 ADJ	785	205 INDEX	112
140 ADG	3.82	GAIN INDEX	110
WDA	3.87	WDA INDEX	114
FINAL WT	1270	SCROTUM	35

Lot 10 TATTOO D 152 POLL 1/8 HEREFORD

ABC BERNICIO P084

ABC YSIDRO Y287 M814797

ABC NICOLINA MACREYA S799

D 152 POLL 1/8 HEREFORD

ABC SOBRANO S030

ABC SOBRANA CECILIA Y309WF RF705763

ABC JACOBA CECILIA R111WF

Dam's Info:

BIRTH DATE	# CLVS	AVG 205 INDEX	
04/7/2011	4	107	
BIRTH DATE	3/12/16	BIRTH WT	101
ACT W WT	798		
205 ADJ	791	205 INDEX	113
140 ADG	3.84	GAIN INDEX	111
WDA	3.85	WDA INDEX	113
FINAL WT	1385	SCROTUM	45

Lot 11 TATTOO D 146

ABC BERNICIO P084

ABC ZODIACO Z166 M836564

ABC LANZA BABERNICE P737

D 146

ABC MAGICO TORO M035 POLL

ABC MAJA ASTRELICE W804 F1135347

ABC NICA ASTRELICE S434

Dam's Info:

BIRTH DATE	# CLVS	AVG 205 INDEX	
6/18/2009	5	106	
BIRTH DATE	3/13/16	BIRTH WT	101
ACT W WT	766		
205 ADJ	763	205 INDEX	109
140 ADG	3.98	GAIN INDEX	115
WDA	3.83	WDA INDEX	113
FINAL WT	1375	SCROTUM	43

Lot 12 TATTOO D 460

ABC YNOCENCIO Y153

ABC AQUILINO A424 M842750

ABC MAJA CRISTALISA S087

D 460

ABC MAGICO TORO M035 POLL

ABC MAJA HILINE Y239 POLL F1141150

ABC KARLA JUNE R312 POLL

Dam's Info:

BIRTH DATE	# CLVS	AVG 205 INDEX	
3/30/2011	4	105	
BIRTH DATE	4/17/16	BIRTH WT	101
ACT W WT	692		
205 ADJ	808	205 INDEX	115
140 ADG	3.58	GAIN INDEX	103
WDA	3.83	WDA INDEX	113
FINAL WT	1240	SCROTUM	38

Lot 13**TATTOO D 375**

ABC TESORO T211 POLL

ABC YNOCENCIO Y153 M814859

ABC JILL FERNAUTA P237

D 375

ABC VECTORO NUEVO W262

ABC VECTORA KATLARGA Z055 F1157793

ABC SERRANA KATELARGA W832

Dam's Info:

BIRTH DATE	# CLVS	AVG 205 INDEX	
3/9/2012	3	101	
BIRTH DATE	4/3/16	BIRTH WT	88
ACT W WT	688		
205 ADJ	773	205 INDEX	110
140 ADG	3.90	GAIN INDEX	112
WDA	3.80	WDA INDEX	112
FINAL WT	1285	SCROTUM	38

Lot 14**TATTOO D 101A SCURS**

ABC BERNICIO P084

ABC ZODIACO Z166 M836564

ABC LANZA BABERNICE P737

D 101A SCURS

ABC RENOMBRE R142 POLL

ABC RENOMBRE FANITA T808 F1085091

ABC EDLA FANITA J899

Dam's Info:

BIRTH DATE	# CLVS	AVG 205 INDEX	
8/20/2007	6	105	
BIRTH DATE	3/10/16	BIRTH WT	101
ACT W WT	738		
205 ADJ	726	205 INDEX	104
140 ADG	4.16	GAIN INDEX	120
WDA	3.80	WDA INDEX	112
FINAL WT	1375	SCROTUM	39

Lot 15**TATTOO D 180 *RETAIN ¼ INTEREST**

ABC BERNICIO P084

ABC YSIDRO Y287 M814797

ABC NICOLINA MACREYA S799

D 180

ABC TESORO T211 POLL

ABC TESORA KNUT KATLARGA X889 POLL F1135502

ABC KNUTA KATLARGA R199 POLL

Dam's Info:

BIRTH DATE	# CLVS	AVG 205 INDEX	
9/20/2010	4	103	
BIRTH DATE	3/15/16	BIRTH WT	100
ACT W WT	660		
205 ADJ	663	205 INDEX	95
140 ADG	4.51	GAIN INDEX	130
WDA	3.78	WDA INDEX	111
FINAL WT	1350	SCROTUM	39

Lot 16**TATTOO D 289**

ABC XERXES X018 POLL

ABC ABSOLUTO CLASICO A047 M842744

ABC TESORA KNUT KATLARGA X889POLL

D 289

ABC MAHOMET M055

ABC FATIMA CHARZADA T815 F1085095

ABC GERA LAULTRA K855

Dam's Info:

BIRTH DATE	# CLVS	AVG 205 INDEX	
8/22/2007	7	110	
BIRTH DATE	3/24/16	BIRTH WT	98
ACT W WT	760		
205 ADJ	794	205 INDEX	113
140 ADG	3.63	GAIN INDEX	105
WDA	3.78	WDA INDEX	111
FINAL WT	1315	SCROTUM	39

Lot 17**TATTOO D 290 POLL *RETAIN ¼ INT**

ABC YSIDRO Y287

ABC BRIOSO B273 M861612

ABC SUBIDA LACYFAY U239 POLL

D 290 POLL * RETAIN ¼ INTEREST

ABC TITANO T271

ABC TITANA ISABELA W198 SCURS F1108905

ABC LOTA DORASABELA S456

Dam's Info:

BIRTH DATE	# CLVS	AVG 205 INDEX	
3/27/2009	5	111	
BIRTH DATE	3/24/16	BIRTH WT	101
ACT W WT	780		
205 ADJ	814	205 INDEX	116
140 ADG	3.46	GAIN INDEX	100
WDA	3.76	WDA INDEX	111
FINAL WT	1310	SCROTUM	45

Lot 18**TATTOO D 94 POLL**

ABC MAGICO TORO M035 POLL

ABC XERXES X018 POLL M810103

ABC MAJA MACKIE T020 POLL

D 094 POLL

ABC TESORO T211 POLL

ABC TESORA DINALISA A683 POLL F1185254

ABC META DINALISA P477 POLL

Dam's Info:

BIRTH DATE	# CLVS	AVG 205 INDEX	
10/17/2013	1	123	
BIRTH DATE	3/8/16	BIRTH WT	103
ACT W WT	752		
205 ADJ	794	205 INDEX	123
140 ADG	4.04	GAIN INDEX	116
WDA	3.76	WDA INDEX	111
FINAL WT	1370	SCROTUM	39

Lot 19**TATTOO D 429**

ABC TESORO T211 POLL

ABC YOEL Y214 M814796

ABC PROSPERA GALICA T126

D 429

ABC XAVIER X332 POLL

ABC UNIVERSA ISABELA A431 POLL F1198723

ABC TITANA ISABELA W198 SCURS

Dam's Info:

BIRTH DATE	# CLVS	AVG 205 INDEX	
4/15/2013	2	96	
BIRTH DATE	4/10/16	BIRTH WT	94
ACT W WT	572		
205 ADJ	685	205 INDEX	98
140 ADG	4.40	GAIN INDEX	127
WDA	3.76	WDA INDEX	111
FINAL WT	1245	SCROTUM	36

Lot 20**TATTOO D 205**

ABC XERXES X018 POLL

ABC ABSOLUTO CLASICO A047 M842744

ABC TESORA KNUT KATLARGA X889

D 205

ABC SALIENTE S263

ABC SALIENTE BERNICE X803 F1135478

ABC NICOLINA BERNICE S781

Dam's Info:

BIRTH DATE	# CLVS	AVG 205 INDEX	
8/13/2010	4	104	
BIRTH DATE	3/17/16	BIRTH WT	98
ACT W WT	778		
205 ADJ	788	205 INDEX	113
140 ADG	3.64	GAIN INDEX	105
WDA	3.76	WDA INDEX	111
FINAL WT	1335	SCROTUM	35

Lot 21**TATTOO D 386**

ABC TESORO T211 POLL

ABC ZACARIAS Z104 M836562

ABC KORA JACKIE N229

D 386

ABC SOBERANO S030

ABC SOBRANA KARI U024 F1091336

ABC LOTA KARI R837

Dam's Info:

BIRTH DATE	# CLVS	AVG 205 INDEX	
2/28/2008	6	106	
BIRTH DATE	4/4/16	BIRTH WT	99
ACT W WT	646		
205 ADJ	708	205 INDEX	101
140 ADG	4.05	GAIN INDEX	117
WDA	3.75	WDA INDEX	110
FINAL WT	1265	SCROTUM	38

Lot 22**TATTOO D 272**

ABC XERXES X018 POLL

ABC ABSOLUTO CLASICO A047 M842744

ABC TESORA KNUT KATLARGA X889

D 272

ABC TESORO T211 POLL

ABC TESORA FRANCESA W836 F1135353

ABC NIK 2 FRANCES K426

Dam's Info:

BIRTH DATE	# CLVS	AVG 205 INDEX	
8/22/2009	5	99	
BIRTH DATE	3/22/16	BIRTH WT	101
ACT W WT	728		
205 ADJ	753	205 INDEX	108
140 ADG	3.80	GAIN INDEX	110
WDA	3.74	WDA INDEX	110
FINAL WT	1310	SCROTUM	34

Lot 23**TATTOO D 147 1/4 HEREFORD**

ABC YNOCENCIO Y153

ABC AQUILINO A424 M842750

ABC MAJA CRISTALISA S087

D 147 1/4 HEREFORD

ABC KAN K261

ABC KANA CECILIA P100WF RF703805

ABC CECILIA G006WF

Dam's Info:

BIRTH DATE	# CLVS	AVG 205 INDEX	
3/11/2004	11	103	
BIRTH DATE	3/14/16	BIRTH WT	97
ACT W WT	768		
205 ADJ	771	205 INDEX	110
140 ADG	3.71	GAIN INDEX	107
WDA	3.73	WDA INDEX	110
FINAL WT	1335	SCROTUM	39

Lot 24**TATTOO D 331**

ABC TESORO T211

ABC ZACARIAS Z104 M836562

ABC KORA JACKIE N229

D 331

ABC SALIENTE S263

ABC SALIENTE DANTORA W834 F1135352

ABC EASY DANTORA M259

Dam's Info:

BIRTH DATE	# CLVS	AVG 205 INDEX	
8/22/2009	5	114	
BIRTH DATE	3/27/16	BIRTH WT	93
ACT W WT	716		
205 ADJ	758	205 INDEX	108
140 ADG	3.72	GAIN INDEX	107
WDA	3.72	WDA INDEX	110
FINAL WT	1285	SCROTUM	43

Lot 25**TATTOO D 359**

ABC XERXES X018 POLL

ABC ABSOLUTO CLASICO A047 M842744

ABC TESORA KNUT KATLARGA X889

D 359

ABC UNIDAD U080 POLL

ABC UNIDAD FINEDANA X243 POLL F1126141

ABC NIKETORA FINEDANA S747 POLL

Dam's Info:

BIRTH DATE	# CLVS	AVG 205 INDEX	
3/25/2010	5	101	
BIRTH DATE	3/31/16	BIRTH WT	100
ACT W WT	714		
205 ADJ	769	205 INDEX	110
140 ADG	3.63	GAIN INDEX	105
WDA	3.72	WDA INDEX	110
FINAL WT	1270	SCROTUM	35

Lot 26**TATTOO D 382**

ABC YSIDRO Y287

ABC BRIOSO B273 M860612

ABC SUBIDA LACYFAY U239

D 382

ABC EXCELENTE X249 SCURS

ABC EXCELENTE CINDY A250 F1173582

ABC SOBRANA CINDY X437

Dam's Info:

BIRTH DATE	# CLVS	AVG 205 INDEX	
3/25/2013	2	109	
BIRTH DATE	4/4/16	BIRTH WT	85
ACT W WT	660		
205 ADJ	766	205 INDEX	109
140 ADG	3.89	GAIN INDEX	112
WDA	3.72	WDA INDEX	110
FINAL WT	1255	SCROTUM	35

Lot 27**TATTOO D 333**

ABC VOLVER W142

ABC ALPANTORO A008 M842743

ABC TIRADORA RIOBERNICE X884 POLL

D 333

ABC BERNICIO P084

ABC BENICIA DANITA U089 SCURS F1091683

ABC MAJA DANITA POLL S023

Dam's Info:

BIRTH DATE	# CLVS	AVG 205 INDEX	
3/16/2008	7	101	
BIRTH DATE	3/28/16	BIRTH WT	98
ACT W WT	678		
205 ADJ	721	205 INDEX	103
140 ADG	3.93	GAIN INDEX	113
WDA	3.72	WDA INDEX	109
FINAL WT	1280	SCROTUM	39

Lot 28**TATTOO D 366**

ABC BERNICIO P084

ABC YSIDRO Y287 M814797

ABC NICOLINA MACREYA S799

D 366

ABC NATORO N043

ABC NICOLINA FRANCES S789 F1082706

ABC DANA FRANCES K281

Dam's Info:

BIRTH DATE	# CLVS	AVG 205 INDEX	
9/24/200	7	108	
BIRTH DATE	4/2/16	BIRTH WT	95
ACT W WT	646		
205 ADJ	702	205 INDEX	100
140 ADG	4.01	GAIN INDEX	116
WDA	3.72	WDA INDEX	109
FINAL WT	1260	SCROTUM	37

Lot 29**TATTOO D 444**

ABC UNIDAD U080

ABC EL ZUMO Z182 M841649

ABC NIKTORA BELLE S286

D 444

ABC TIRADOR T155 POLL

ABC TIRADORA MACDARTE Z100 F1157807

ABC PROSPERA MACDARTE T174

Dam's Info:

BIRTH DATE	# CLVS	AVG 205 INDEX	
3/18/2012	3	104	
BIRTH DATE	4/12/16	BIRTH WT	92
ACT W WT	636		
205 ADJ	746	205 INDEX	107
140 ADG	3.82	GAIN INDEX	110
WDA	3.71	WDA INDEX	109
FINAL WT	1220	SCROTUM	34

Lot 30**TATTOO D 319**

ABC TESORO T211 POLL

ABC YNOGENCIO Y153 M814859

ABC JILL FERNAUTA P237

D 319

ABC SERRANO S212A

ABC SERRANA GENA U112 F1091691

ABC LATALI DORTADENA F700

Dam's Info:

BIRTH DATE	# CLVS	AVG 205 INDEX	
3/19/2008	7	102	
BIRTH DATE	3/26/16	BIRTH WT	97
ACT W WT	682		
205 ADJ	718	205 INDEX	103
140 ADG	3.88	GAIN INDEX	112
WDA	3.68	WDA INDEX	108
FINAL WT	1275	SCROTUM	34

Lot 31**TATTOO D 101B SCURS**

ABC YNOCENCIO Y153

ABC AQUILINO A424 M842750

ABC MAJA CRISTALISA S087

D 101B SCURS

ABC RAFAEL R246 SCURS

ABC RAFAELA FRANCESCA U854 POLL F1103580

ABC LADANA MERHARIET J506

Dam's Info:

BIRTH DATE	# CLVS	AVG 205 INDEX	
9/4/2008	6	107	
BIRTH DATE	3/9/16	BIRTH WT	85
ACT W WT	764		
205 ADJ	748	205 INDEX	107
140 ADG	3.73	GAIN INDEX	108
WDA	3.68	WDA INDEX	108
FINAL WT	1335	SCROTUM	37

Lot 32**TATTOO D 353**

ABC YNCENDIO Y153 POLL

ABC BENEFICIO B274 M860613

ABC LORA KATIELARGA R177 POLL

D 353

ABC MAGICO TORO M035 POLL

ABC MAJA HERMINE W899 F1126068

ABC SARA HERMINE M003

Dam's Info:

BIRTH DATE	# CLVS	AVG 205 INDEX	
12/04/2009	5	106	
BIRTH DATE	3/31/16	BIRTH WT	86
ACT W WT	646		
205 ADJ	697	205 INDEX	100
140 ADG	3.95	GAIN INDEX	114
WDA	3.67	WDA INDEX	108
FINAL WT	1250	SCROTUM	33

Lot 33**TATTOO D 456**

ABC UNIDAD U080 POLL

ABC EL ZUMO Z182 M841649

ABC NIKTORA BELLE S286

D 456

ABC PROSPERO P132

ABC PROSPERA GALICA T126 F1073471

ABC KANA GALICA N715 POLL

Dam's Info:

BIRTH DATE	# CLVS	AVG 205 INDEX	
3/14/2007	8	109	
BIRTH DATE	4/15/16	BIRTH WT	90
ACT W WT	702		
205 ADJ	815	205 INDEX	116
140 ADG	3.22	GAIN INDEX	93
WDA	3.67	WDA INDEX	108
FINAL WT	1195	SCROTUM	37

Lot 34**TATTOO D 387**

ABC TESORO T211 POLL

ABC ZACARIAS Z104 M836562

ABC KORA JACKIE N229

D 387

ABC EXPLOSIVO X409

ABC EXPLOSIVA FERSONJA Z135 F1157819

ABC SALIENTE FERSONJA W861

Dam's Info:

BIRTH DATE	# CLVS	AVG 205 INDEX	
3/23/2012	3	99	
BIRTH DATE	4/4/16	BIRTH WT	98
ACT W WT	670		
205 ADJ	755	205 INDEX	108
140 ADG	3.66	GAIN INDEX	105
WDA	3.65	WDA INDEX	107
FINAL WT	1230	SCROTUM	37

Lot 35**TATTOO D 275**

ABC BERNICIO P084

ABC ZODIACO Z166 M836564

ABC LANZA BABERNICE P737

D 275

ABC NIKETORO N197 POLL

ABC NIKTORA KATLARGA 2 TW R192 F1029936

ABC GERA HERLARGA J529

Dam's Info:

BIRTH DATE	# CLVS	AVG 205 INDEX	
3/19/2005	8	102	
BIRTH DATE	3/22/16	BIRTH WT	102
ACT W WT	734		
205 ADJ	762	205 INDEX	109
140 ADG	3.54	GAIN INDEX	102
WDA	3.64	WDA INDEX	107
FINAL WT	1275	SCROTUM	38

Lot 36**TATTOO D191 *RETAIN 1/4 INTEREST**

ABC XERXES X018 POLL

ABC ABSOLUTO CLASICO A047 M842744

ABC TESORA KNUT KATLARGA R199

D 191

ABC VALENTINO W120

ABC VALENTINA ALICHISPA Y197

ABC RANCHERA ALICHISPA T201

Dam's Info:

BIRTH DATE	# CLVS	AVG 205 INDEX	
3/25/2011	4	100	
BIRTH DATE	3/16/16	BIRTH WT	90
ACT W WT	748		
205 ADJ	754	205 INDEX	108
140 ADG	3.58	GAIN INDEX	103
WDA	3.64	WDA INDEX	107
FINAL WT	1295	SCROTUM	37

Lot 37**TATTOO D 415**

ABC SALIENTE S263

ABC XALVADOR X853 M814799

ABC KORA ALANA JEAN N787

D 415

ABC BERNICIO P084

ABC BERNICIO ROBGENA Y810 F1151912

ABC KORA ROBGENA N146

Dam's Info:

BIRTH DATE	# CLVS	AVG 205 INDEX	
8/14/2011	3	103	
BIRTH DATE	4/8/16	BIRTH WT	96
ACT W WT	646		
205 ADJ	742	205 INDEX	106
140 ADG	3.69	GAIN INDEX	106
WDA	3.63	WDA INDEX	107
FINAL WT	1210	SCROTUM	33

Lot 38**TATTOO D 396**

ABC SALIENTE S263

ABC XALVADOR X853 M814799

ABC KORA ALANA JEAN N787

D 396

ABC PRIMOKRO P132

ABC PRIMAKORA MERNA T812 F1085093

ABC LATIMA TRATORA L276

Dam's Info:

BIRTH DATE	# CLVS	AVG 205 INDEX	
8/22/2007	6	113	
BIRTH DATE	4/5/16	BIRTH WT	95
ACT W WT	704		
205 ADJ	777	205 INDEX	111
140 ADG	3.37	GAIN INDEX	97
WDA	3.63	WDA INDEX	107
FINAL WT	1220	SCROTUM	31

Lot 39**TATTOO D 393**

ABC BERNICO P084

ABC YSIDRO Y287 M814797

ABC NICOLINA MACREYA S799

D 393

ABC TIRADOR T155 POLL

ABC TIRADORA DOREDE X135 POLL F1126115

ABC SALIENTE DOREDE U354

Dam's Info:

BIRTH DATE	# CLVS	AVG 205 INDEX	
3/18/2010	5	108	
BIRTH DATE	4/5/16	BIRTH WT	102
ACT W WT	790		
205 ADJ	872	205 INDEX	125
140 ADG	2.81	GAIN INDEX	81
WDA	3.63	WDA INDEX	107
FINAL WT	1220	SCROTUM	38

Lot 40**TATTOO D 125**

ABC YNOCENCIO Y153

ABC AQUILINO A424 M842750

ABC MAJA CRISTALISA S087

D 125

ABC BERNICIO P084

ABC BENICIA EDIE U396 F1091803

ABC MAGGIE EDIE P204

Dam's Info:

BIRTH DATE	# CLVS	AVG 205 INDEX	
4/13/2008	7	94	
BIRTH DATE	3/11/16	BIRTH WT	96
ACT W WT	684		
205 ADJ	676	205 INDEX	97
140 ADG	4.09	GAIN INDEX	118
WDA	3.63	WDA INDEX	107
FINAL WT	1310	SCROTUM	39

Lot 41**TATTOO D 347**

ABC VOLVER W142 POLL

ABC ALPANTORO A008 M842743

ABC TIRADORA RIO BERNICE X884

D 347

ABC TESORO T211 POLL

ABC TESORA VENICE Y227 F1141147

ABC KNUTA PERNICE M048

Dam's Info:

BIRTH DATE	# CLVS	AVG 205 INDEX	
3/29/2011	4	110	
BIRTH DATE	3/29/16	BIRTH WT	90
ACT W WT	750		
205 ADJ	802	205 INDEX	115
140 ADG	3.20	GAIN INDEX	92
WDA	3.62	WDA INDEX	106
FINAL WT	1240	SCROTUM	33

Lot 42**TATTOO D 242**

ABC YNOCENCIO Y153

ABC AQUILINO A424 M842750

ABC MAJA CRISTALISA S087

D 242

ABC BERNICIO P084

ABC BERNICIA ZONIKTORA W820 F1135349

ABC NIKETORA ZORNIKOMA R146

Dam's Info:

BIRTH DATE	# CLVS	AVG 205 INDEX	
8/19/2009	5	102	
BIRTH DATE	3/19/16	BIRTH WT	98
ACT W WT	674		
205 ADJ	726	205 INDEX	104
140 ADG	3.93	GAIN INDEX	113
WDA	3.61	WDA INDEX	106
FINAL WT	1275	SCROTUM	33

Lot 43**TATTOO D 121**

ABC BERNICIO P084

ABC YSIDRO Y287 M814797

ABC NICOLINA MACREYA S799

D 121

ABC RUBIO R431 POLL

ABC RUBIA NAUTNIKI Y142 POLL F1145767

ABC KANA NAUTNIKI M225

Dam's Info:

BIRTH DATE	# CLVS	AVG 205 INDEX	
3/21/2011	3	104	
BIRTH DATE	3/12/16	BIRTH WT	98
ACT W WT	762		
205 ADJ	756	205 INDEX	108
140 ADG	3.52	GAIN INDEX	101
WDA	3.61	WDA INDEX	106
FINAL WT	1300	SCROTUM	39

Lot 44**TATTOO D 281**

ABC TESORO T211

ABC ZACARIAS Z104 M836562

ABC KORA JACKIE N229

D 281

ABC BERNICIO P084

ABC BENICIA CHISPA S128 F1051116

ABC GERA LASPA L348

Dam's Info:

BIRTH DATE	# CLVS	AVG 205 INDEX	
3/17/2006	8	102	
BIRTH DATE	3/23/16	BIRTH WT	102
ACT W WT	738		
205 ADJ	767	205 INDEX	110
140 ADG	3.41	GAIN INDEX	98
WDA	3.61	WDA INDEX	106
FINAL WT	1260	SCROTUM	46

Lot 45**TATTOO D 419**

ABC TESORO T211 POLL

ABC YNOCENCIO Y153 M814859

ABC JILL FERNAUTA P237

D 419

ABC BERNICIO P084

ABC BERNICIA MERIALEGRA U500 F1091833

ABC KONA MERIALEGRA P365

Dam's Info:

BIRTH DATE	# CLVS	AVG 205 INDEX	
5/12/2008	7	98	
BIRTH DATE	4/8/16	BIRTH WT	95
ACT W WT	630		
205 ADJ	704	205 INDEX	101
140 ADG	3.73	GAIN INDEX	107
WDA	3.60	WDA INDEX	106
FINAL WT	1200	SCROTUM	36

Lot 46**TATTOO D 178A**

ABC VOLVER W142 POLL

ABC ALPANTORO A008 M842743

ABC TIRADORA RIO BERNICE X884

D 178A

ABC MAGICO TORO M035 POLL

ABC MAJA MACLARA U101 POLL F1091687

ABC KARLA MACLARA P513 POLL

Dam's Info:

BIRTH DATE	# CLVS	AVG 205 INDEX	
3/17/2008	6	110	
BIRTH DATE	3/15/16	BIRTH WT	97
ACT W WT	752		
205 ADJ	758	205 INDEX	108
140 ADG	3.48	GAIN INDEX	100
WDA	3.60	WDA INDEX	106
FINAL WT	1285	SCROTUM	38

Lot 47**TATTOO D 141**

ABC BERNICIO P084

ABC YSIDRO Y287 M814797

ABC NICOLINA MACREYA S799

D 141

ABC SERRANO S212A

ABC SERRANA ABIGALISA W860 POLL F1135360

ABC KANA ABIGAL N710 POLL

Dam's Info:

BIRTH DATE	# CLVS	AVG 205 INDEX	
9/2/2009	5	107	
BIRTH DATE	3/14/16	BIRTH WT	101
ACT W WT	750		
205 ADJ	750	205 INDEX	107
140 ADG	3.46	GAIN INDEX	100
WDA	3.58	WDA INDEX	105
FINAL WT	1280	SCROTUM	39

Lot 48**TATTOO NO TATTOO**

ABC YNOCENCIO Y153

ABC AQUILINO A424 M842750

ABC MAJA CRISTALISA S087

NO TATTOO

ABC BERNICIO P084

ABC BERNICIA SIMONE W841 F1135354

ABC HILTONA SIMONE M853

Dam's Info:

BIRTH DATE	# CLVS	AVG 205 INDEX	
8/25/2009	5	105	
BIRTH DATE	3/7/16	BIRTH WT	95
ACT W WT	822		
205 ADJ	798	205 INDEX	114
140 ADG	3.12	GAIN INDEX	90
WDA	3.56	WDA INDEX	105
FINAL WT	1300	SCROTUM	40

Lot 49**TATTOO D 379**

ABC YNOCENCIO Y153

ABC AQUILINO A424 M842750

ABC MAJA CRISTALISA S087

D 379

ABC JARVIS J503

ABC JARVA AIGDANA N220 POLL

ABC PERFECTA MACA D145 POLL

Dam's Info:

BIRTH DATE	# CLVS	AVG 205 INDEX	
3/30/2003	10	108	
BIRTH DATE	4/4/16	BIRTH WT	95
ACT W WT	670		
205 ADJ	739	205 INDEX	106
140 ADG	3.46	GAIN INDEX	100
WDA	3.56	WDA INDEX	105
FINAL WT	1200	SCROTUM	38

Lot 50**TATTOO D 168**

ABC XERXES X018 POLL

ABC ABSOLUTO CLASICO A047 M842744

ABC TESORA KNUT KATLARGA X889

D 168

ABC BERNICIO P084

ABC BERNICIA RITA X383 POLL F1126171

ABC JAC HERMA L346

Dam's Info:

BIRTH DATE	# CLVS	AVG 205 INDEX	
4/9/2010	5	91	
BIRTH DATE	3/15/16	BIRTH WT	94
ACT W WT	634		
205 ADJ	637	205 INDEX	91
140 ADG	4.16	GAIN INDEX	120
WDA	3.56	WDA INDEX	105
FINAL WT	1270	SCROTUM	38

Lot 51**TATTOO D 114**

ABC VOLVER W142 POLL

ABC ALPANTORO A008 M842743

ABC TIRADRA RIO BERNICE X884

D 114

ABC UNVERSO U363

ABC UNIVERSO ZOBELLEICE X124 POLL F1126112

ABC JACOBA LANITA M814 POLL

Dam's Info:

BIRTH DATE	# CLVS	AVG 205 INDEX	
3/17/2010	6—1 SET TWINS	99	
BIRTH DATE	3/10/16	BIRTH WT	80
ACT W WT	724		
205 ADJ	712	205 INDEX	102
140 ADG	3.67	GAIN INDEX	106
WDA	3.55	WDA INDEX	104
FINAL WT	1285	SCROTUM	36

Lot 52**TATTOO D 463 SCURS**

ABC UNIDAD U080 POLL

ABC EL ZUMO Z182 M841649

ABC NIKTORA BELLE S286

D 463 SCURS

ABC BERNICIO P084

ABC BERNICIA EXSONJA W886 F1135371

ABC JILL NAUTSONANDA R301

Dam's Info:

BIRTH DATE	# CLVS	AVG 205 INDEX	
9/23/2009	5	107	
BIRTH DATE	4/17/16	BIRTH WT	98
ACT W WT	700		
205 ADJ	820	205 INDEX	117
140 ADG	2.94	GAIN INDEX	85
WDA	3.55	WDA INDEX	104
FINAL WT	1150	SCROTUM	36

Lot 53**TATTOO D 297**

ABC TESORO T211 POLL

ABC ZACARIAS Z104 M836562

ABC KORA JACKIE N229

D 297

ABC TITANO T271

ABC TITANA CRISTAL X841 F1135493

ABC CAJA CRISTAL N122 POLL

Dam's Info:

BIRTH DATE	# CLVS	AVG 205 INDEX	
8/31/2010	5	101	
BIRTH DATE	3/24/16	BIRTH WT	101
ACT W WT	664		
205 ADJ	692	205 INDEX	99
140 ADG	3.73	GAIN INDEX	108
WDA	3.55	WDA INDEX	104
FINAL WT	1235	SCROTUM	35

Lot 54**TATTOO D 407**

ABC XERXES X018 POLL

ABC ABSOLUTO CLASICO A047 M842744

ABC TESORA KNUT KATLARGA X889

D 407

ABC UNIDAD U080 POLL

ABC UNIDAD KATLARGA Y861 POLL F1151931

ABC RUBIA KATLARGA T134

Dam's Info:

BIRTH DATE	# CLVS	AVG 205 INDEX	
9/27/2011	3	112	
BIRTH DATE	4/7/16	BIRTH WT	98
ACT W WT	684		
205 ADJ	781	205 INDEX	112
140 ADG	3.27	GAIN INDEX	94
WDA	3.55	WDA INDEX	104
FINAL WT	1185	SCROTUM	37

Lot 55**TATTOO D 273**

ABC BERNICIO P084

ABC ZODIACO Z166 M836564

ABC LANZA BABERNICE P737

D 273

ABC PRIMOKORO P132

ABC PRIMAKORA MAVEDIE T867 F1085175

ABC GERA LASTRA K269

Dam's Info:

BIRTH DATE	# CLVS	AVG 205 INDEX	
9/12/2007	7	112	
BIRTH DATE	3/23/16	BIRTH WT	97
ACT W WT	758		
205 ADJ	788	205 INDEX	113
140 ADG	3.12	GAIN INDEX	90
WDA	3.54	WDA INDEX	104
FINAL WT	1235	SCROTUM	30

Lot 56**TATTOO D 259A**

ABC SALIENTE S263

ABC XALVADOR X853 M814799

ABC KORA ALANA JEAN N787

D 259A

ABC NIKETORO N197 POLL

ABC NIKETORO MAVILARIA X261 POLL F1126144

ABC LEADER MAVILARIA N014

Dam's Info:

BIRTH DATE	# CLVS	AVG 205 INDEX	
3/26/2010	5	98	
BIRTH DATE	3/21/16	BIRTH WT	95
ACT W WT	650		
205 ADJ	670	205 INDEX	96
140 ADG	3.86	GAIN INDEX	111
WDA	3.53	WDA INDEX	104
FINAL WT	1240	SCROTUM	36

Lot 57**TATTOO D 219**

ABC SALIENTE S263

ABC XALVADOR X853 M814799

ABC KORA ALANA JEAN N787

D 219

ABC KORO K493

ABC KORA JACKIE N229 F983521

ABC MACKIE B226 POLL

Dam's Info:

BIRTH DATE	# CLVS	AVG 205 INDEX	
3/30/2003	10	104	
BIRTH DATE	3/18/16	BIRTH WT	97
ACT W WT	720		
205 ADJ	735	205 INDEX	105
140 ADG	3.46	GAIN INDEX	100
WDA	3.53	WDA INDEX	104
FINAL WT	1250	SCROTUM	37

Lot 58**TATTOO D 318**

ABC YNOCENCIO Y153

ABC AQUILINO A424 M842750

ABC MAJA CRISTALISA S087

D 318

ABC SALIENTE S263

ABC SALIENTE NAUTSONANDA X827 SCURS F1135487

ABC JILL NAUTSONANDA R301

Dam's Info:

BIRTH DATE	# CLVS	AVG 205 INDEX	
8/22/2010	4	103	
BIRTH DATE	3/26/16	BIRTH WT	98
ACT W WT	744		
205 ADJ	784	205 INDEX	112
140 ADG	3.11	GAIN INDEX	90
WDA	3.53	WDA INDEX	104
FINAL WT	1220	SCROTUM	32

Lot 59**TATTOO D 325 SCURS**

ABC TESORO T211 POLL

ABC ZACATECAS Z104 M836562

ABC KORA JACKIE N229

D 325 SCURS

ABC MAGICO TORO M035 POLL

ABC MAJA ATORASONJA W324 POLL F1108930

ABC SARA LADSONJA P338

Dam's Info:

BIRTH DATE	# CLVS	AVG 205 INDEX	
4/9/2009	6	103	
BIRTH DATE	3/27/16	BIRTH WT	96
ACT W WT	680		
205 ADJ	720	205 INDEX	103
140 ADG	3.50	GAIN INDEX	101
WDA	3.52	WDA INDEX	104
FINAL WT	1215	SCROTUM	35

Lot 60**TATTOO D 305**

ABC TESORO T211 POLL

ABC ZACARIAS Z104 M836562

ABC KORA JACKIE N229

D 305

ABC TESORO T211 POLL

ABC TESORA CRISTAL AGATE X832 SCURS F1135489

ABC KONA LACRYSTAL M422

Dam's Info:

BIRTH DATE	# CLVS	AVG 205 INDEX	
8-27-2011	4	106	
BIRTH DATE	3/24/16	BIRTH WT	92
ACT W WT	700		
205 ADJ	731	205 INDEX	104
140 ADG	3.40	GAIN INDEX	98
WDA	3.51	WDA INDEX	103
FINAL WT	1220	SCROTUM	38

Lot 61**TATTOO D 037**

ABC MAGICO TORO M035 POLL

ABC XERXES X018 POLL M1191831

ABC MAJA MACKIE T020 POLL

D 037

ABC ZELTZIN Z178

ABC ZELTZINA MERNA B119 F1191831

ABC PRIMAKORA MERNA T812

Dam's Info:

BIRTH DATE	# CLVS	AVG 205 INDEX	
3/14/2014	1	101	
BIRTH DATE	2/27/16	BIRTH WT	85
ACT W WT	632		
205 ADJ	652	205 INDEX	101
140 ADG	4.40	GAIN INDEX	127
WDA	3.49	WDA INDEX	103
FINAL WT	1305	SCROTUM	36

Lot 62**TATTOO D 317**

ABC TESOR T211 POLL

ABC YNOCENCIO Y153 M814859

ABC JILL FERNAUTA P237

D 317

ABC NATORO N043

ABC NICOLINA ALANA JEANN S767 (S786) F1082714

ABC JACOBA JEANN M822

Dam's Info:

BIRTH DATE	# CLVS	AVG 205 INDEX	
9/13/2006	8	107	
BIRTH DATE	3/26/16	BIRTH WT	99
ACT W WT	642		
205 ADJ	676	205 INDEX	97
140 ADG	3.68	GAIN INDEX	106
WDA	3.48	WDA INDEX	102
FINAL WT	1205	SCROTUM	36

Lot 63**TATTOO D 057 POLL**

ABC KNUT K532

ABC MAGICO TORO M035 POLL

ABC EDLA HILSONA J820

D 057 POLL

ABC ULTIMO LATINO U042 POLL

ABC ULTIMA LATINA AGATE A646 POLL F1185245

ABC KORA AGATE R392

Dam's Info:

BIRTH DATE	# CLVS	AVG 205 INDEX	
8/30/2013	1	117	
BIRTH DATE	3/3/16	BIRTH WT	100
ACT W WT	728		
205 ADJ	756	205 INDEX	117
140 ADG	3.64	GAIN INDEX	105
WDA	3.48	WDA INDEX	102
FINAL WT	1285	SCROTUM	39

Lot 64**TATTOO D 227**

ABC VOLVER W142 POLL

ABC ALPANTORO A008 M842743

ABC TIRADORA RIO BERNICE X884

D 227

ABC HOWE H27

ABC SARA LADSONJA P338 F1006542

ABC DANA ATORA J902 POLL

Dam's Info:

BIRTH DATE	# CLVS	AVG 205 INDEX	
3/27/2004	10	107	
BIRTH DATE	3/18/16	BIRTH WT	90
ACT W WT	708		
205 ADJ	723	205 INDEX	103
140 ADG	3.41	GAIN INDEX	98
WDA	3.47	WDA INDEX	102
FINAL WT	1230	SCROTUM	38

Lot 65**TATTOO D 236**

ABC XEERXES X018 POLL

ABC ABSOLUTO CLASICO A047 M842744

ABC TESORA KNUT KATLARGA X889

D 236

ABC TESORO T211 POLL

ABC TESORA 3 KATLARGA Z475 F1157893

ABC NIKETORA KATE W167

Dam's Info:

BIRTH DATE	# CLVS	AVG 205 INDEX	
5/4/2012	3	99	
BIRTH DATE	3/19/16	BIRTH WT	99
ACT W WT	628		
205 ADJ	661	205 INDEX	94
140 ADG	3.90	GAIN INDEX	112
WDA	3.47	WDA INDEX	102
FINAL WT	1225	SCROTUM	33

Lot 66**TATTOO D 077**

ABC XERXES X018 POLL

ABC ABSOLUTO CLASICO A047 M842744

ABC TESORA KNUT KATLARGA X889

D 077

ABC LATORO ATORO D398

ABC ATORA BELLE T191 F1073420

ABC DANA BELLE K209 POLL

Dam's Info:

BIRTH DATE	# CLVS	AVG 205 INDEX	
3/20/2007	7	93	
BIRTH DATE	3/7/16	BIRTH WT	100
ACT W WT	668		
205 ADJ	649	205 INDEX	93
140 ADG	3.87	GAIN INDEX	112
WDA	3.45	WDA INDEX	102
FINAL WT	1260	SCROTUM	35

Lot 67**TATTOO D 014**

ABC MAGICO TORO M035 POLL

ABC XERXES X018 POLL M810103

ABC MAJA MACKIE T020 POLL

D 014

ABC SOBRANO S030

ABC SOBRANA POMONA B010 F1190988

ABC SALIENTE POMONINA Y856

Dam's Info:

BIRTH DATE	# CLVS	AVG 205 INDEX	
2/22/14	1	111	
BIRTH DATE	2/24/16	BIRTH WT	97
ACT W WT	708		
205 ADJ	717	205 INDEX	111
140 ADG	3.87	GAIN INDEX	112
WDA	3.45	WDA INDEX	101
FINAL WT	1300	SCROTUM	39

Lot 68**TATTOO D 220**

ABC TESORO T211 POLL

ABC YOEL Y214 M814796

ABC PROSPERA GALICA T126

D 220

ABC ULTIMO LATINO U042 POLL

ABC LATINA RIOBERNICE A183 POLL F1173664

ABC MAJA RIOBERNICE T853

Dam's Info:

BIRTH DATE	# CLVS	AVG 205 INDEX	
3/20/2013	2	101	
BIRTH DATE	3/18/16	BIRTH WT	88
ACT W WT	674		
205 ADJ	726	205 INDEX	104
140 ADG	3.57	GAIN INDEX	103
WDA	3.45	WDA INDEX	101
FINAL WT	1220	SCROTUM	41

Lot 69**TATTOO D 160**

ABC VOLVER W142

ABC ALPANTORO A008 M842743

ABC KANA SHARON M467

D 160

ABC NIKETORO N197 POLL

ABC NIKETORA EDMA U236 F1147181

ABC LANZA EDMA R0221

Dam's Info:

BIRTH DATE	# CLVS	AVG 205 INDEX	
3/29/2008	7	96	
BIRTH DATE	3/14/16	BIRTH WT	90
ACT W WT	718		
205 ADJ	718	205 INDEX	103
140 ADG	3.35	GAIN INDEX	96
WDA	3.44	WDA INDEX	101
FINAL WT	1230	SCROTUM	36

Lot 70**TATTOO D 395**

ABC UNIDAD U080

ABC EL ZUMO Z182 M841649

ABC NIKTORA BELLE S286

D 395

ABC NIKETORO N197 POLL

ABC NIKETORA KATE W167 F1108899

ABC MAJA 3 KATLARGA P043

Dam's Info:

BIRTH DATE	# CLVS	AVG 205 INDEX	
3/24/2009	6	106	
BIRTH DATE	4/6/16	BIRTH WT	99
ACT W WT	658		
205 ADJ	728	205 INDEX	104
140 ADG	3.22	GAIN INDEX	93
WDA	3.43	WDA INDEX	101
FINAL WT	1150	SCROTUM	35

Lot 71**TATTOO D 096**

ABC UNIDAD U080

ABC EL ZUMO Z182 M841649

ABC NIKTORA BELLE S286

D 096

ABC YOEL Y214

ABC YOEL DORISABELA B212 RF707815

ABC KONA 1 DORISABELA P160

Dam's Info:

BIRTH DATE	# CLVS	AVG 205 INDEX	
3/22/2014	1	110	
BIRTH DATE	3/9/16	BIRTH WT	95
ACT W WT	668		
205 ADJ	714	205 INDEX	110
140 ADG	3.77	GAIN INDEX	109
WDA	3.43	WDA INDEX	101
FINAL WT	1245	SCROTUM	37

Lot 72**TATTOO D 062 POLL**

ABC XERXES X018 POLL

ABC ARGENTORO A372 M842749

ABC TITANA ABRAGENA X839

D 062 POLL

ABC RENOMBRE R142 POLL

ABC RENOMBRE NABERNICE W854 POLL F1135357

ABC NICOLINA BERNICE S781

Dam's Info:

BIRTH DATE	# CLVS	AVG 205 INDEX	
8/29/2009	5	105	
BIRTH DATE	3/3/16	BIRTH WT	96
ACT W WT	786		
205 ADJ	751	205 INDEX	107
140 ADG	3.13	GAIN INDEX	90
WDA	3.43	WDA INDEX	101
FINAL WT	1265	SCROTUM	38

Lot 73**TATTOO D 154**

ABC TESORO T211 POLL

ABC YOEL Y214 M814796

ABC PROSPERA GALICA T126

D 154

ABC XERXES X018

ABC XERXES FRANCESA ELFA A187 F117494

ABC TESORA FRANCESA ELFA X828

Dam's Info:

BIRTH DATE	# CLVS	AVG 205 INDEX	
3/21/2013	2	90	
BIRTH DATE	3/14/16	BIRTH WT	70
ACT W WT	668		
205 ADJ	708	205 INDEX	GRAFT
140 ADG	3.61	GAIN INDEX	104
WDA	3.41	WDA INDEX	100
FINAL WT	1220	SCROTUM	33

Lot 74**TATTOO D 074**

ABC YOEL Y214

ABC EL BOLSO B077 M860611

ABC RAFAEL FRANCESCA U854

D 074

ABC XALVADOR X853

ABC XALVADORA CHAREGUS A412 F1174286

ABC GERA CHAREGUS K274

Dam's Info:

BIRTH DATE	# CLVS	AVG 205 INDEX	
4/10/2013	2	99	
BIRTH DATE	3/5/16	BIRTH WT	97
ACT W WT	680		
205 ADJ	696	205 INDEX	99
140 ADG	3.73	GAIN INDEX	107
WDA	3.41	WDA INDEX	100
FINAL WT	1250	SCROTUM	32

Lot 75**TATTOO D 327**

ABC YNCENDIO Y113 POLL

ABC BENEFICIO B274 M860613

ABC LORA KATLARGA R177

D327

ABC RENOMBRE R142 POLL

ABC RENOMBRE CHARHANNA U377 F1091801

ABC GERA CLADA L522

Dam's Info:

BIRTH DATE	# CLVS	AVG 205 INDEX	
4/12/2008	7	95	
BIRTH DATE	3/27/16	BIRTH WT	96
ACT W WT	688		
205 ADJ	728	205 INDEX	104
140 ADG	3.18	GAIN INDEX	92
WDA	3.41	WDA INDEX	100
FINAL WT	1175	SCROTUM	38

Lot 76**TATTOO D 402**

ABC TESORO T211 POLL

ABC YOEL Y214 M814796

ABC PROSPERA GALICA T126

D 402

ABC ULTIMO LATINO U042 POLL

ABC ULTA LATINA CENTINELA A194 POLL F1174256

ABC MAJA CENTINELA U129 POLL

Dam's Info:

BIRTH DATE	# CLVS	AVG 205 INDEX	
3/21/2013	2	103	
BIRTH DATE	4/6/16	BIRTH WT	88
ACT W WT	620		
205 ADJ	727	205 INDEX	104
140 ADG	3.40	GAIN INDEX	98
WDA	3.40	WDA INDEX	100
FINAL WT	1140	SCROTUM	33

Lot 77**TATTOO D 240**

ABC EXCELENTE X249

ABC ANCHO A058 SCURS M842745

ABC PROSPERA GENACLEO S479

D 240

ABC BERNICIO P084

ABC DBL META BERNICIATINA X318 F1126150

ABC META TRILARA POLL P411

Dam's Info:

BIRTH DATE	# CLVS	AVG 205 INDEX	
3/31/2010	5	97	
BIRTH DATE	3/19/16	BIRTH WT	97
ACT W WT	686		
205 ADJ	701	205 INDEX	100
140 ADG	3.36	GAIN INDEX	97
WDA	3.40	WDA INDEX	100
FINAL WT	1200	SCROTUM	36

Lot 78**TATTOO D 49A SCURS**

ABC XERXES X018 POLL

ABC ARGENTORO A372 M842749

ABC TITANA ABRAGENA X839

D 049A SCURS

ABC RAFAEL R246 SCURS

ABC RAFAELA BERDINELFA U111 POLL F1091690

ABC LANZA BERDINE P096

Dam's Info:

BIRTH DATE	# CLVS	AVG 205 INDEX	
3/18/2008	7	102	
BIRTH DATE	3/1/16	BIRTH WT	95
ACT W WT	874		
205 ADJ	828	205 INDEX	118
140 ADG	2.52	GAIN INDEX	73
WDA	3.40	WDA INDEX	100
FINAL WT	1260	SCROTUM	38

Lot 79

TATTOO D 392 POLL

ABC XERXES X018 POLL

ABC ZACATECAS Z018 POLL M836559

ABC RENOMBRE FRANCESA X148

D 392 POLL

ABC EXHIBICION X138 POLL

ABC EXHIBICION MACNICE Z403 1198405

ABC KORA MACNICE N190

Dam's Info:

BIRTH DATE	# CLVS	AVG 205 INDEX	
4/8/2012	3	101	
BIRTH DATE	4/5/16	BIRTH WT	87
ACT W WT	708		
205 ADJ	803	205 INDEX	115
140 ADG	2.82	GAIN INDEX	81
WDA	3.39	WDA INDEX	100
FINAL WT	1140	SCROTUM	33

Lot 80

TATTOO D 409

ABC UNIDAD U080

ABC EL ZUMO Z182 M841649

ABC NIKTORA BELLE S286

D 409

ABC MAHOMET M055

ABC FATIMA NIKCHARITA S765 SCURS F1082707

ABC GERA NIKCHARA L491

Dam's Info:

BIRTH DATE	# CLVS	AVG 205 INDEX	
9/8/2006	7	110	
BIRTH DATE	4/7/16	BIRTH WT	100
ACT W WT	654		
205 ADJ	726	205 INDEX	104
140 ADG	3.11	GAIN INDEX	90
WDA	3.38	WDA INDEX	100
FINAL WT	1130	SCROTUM	34

Lot 81

TATTOO D 249

ABC EXCELENTE X249

ABC ANCHO A058 SCURS M842745

ABC PROSPERA GENACLEO S479

D 249

ABC LATORO ATORO D398

ABC ATORA MACKIE W249 F1108915

ABC HILTONA MACKIE M475

Dam's Info:

BIRTH DATE	# CLVS	AVG 205 INDEX	
4/1/2009	5	97	
BIRTH DATE	3/20/16	BIRTH WT	97
ACT W WT	668		
205 ADJ	685	205 INDEX	98
140 ADG	3.41	GAIN INDEX	98
WDA	3.38	WDA INDEX	99
FINAL WT	1190	SCROTUM	34

Lot 82

TATTOO D 438

ABC TESORO T211 POLL

ABC YOEL Y214 M814796

ABC PROSPERA GALICA T126

D 438

ABC UNIVERSO U363

ABC UNIVERSA DORISABELA A097 POLL RF707087

ABC KONA 1 DORISABELA P160

Dam's Info:

BIRTH DATE	# CLVS	AVG 205 INDEX	
3/13/2013	2	96	
BIRTH DATE	4/11/16	BIRTH WT	95
ACT W WT	568		
205 ADJ	683	205 INDEX	98
140 ADG	3.58	GAIN INDEX	103
WDA	3.38	WDA INDEX	99
FINAL WT	1115	SCROTUM	31

Lot 83

TATTOO D 271

ABC BERNICIO P084

ABC YSIDRO Y287 M814797

ABC NICOLINA MACREYA S799

D 271

ABC SALIENTE S263

ABC SALIENTE ALISPA 2 Z245 F1157862

ABC BERNICIA CHISPA S128

Dam's Info:

BIRTH DATE	# CLVS	AVG 205 INDEX	
4/1/2012	3	106	
BIRTH DATE	3/22/16	BIRTH WT	99
ACT W WT	698		
205 ADJ	725	205 INDEX	104
140 ADG	3.15	GAIN INDEX	91
WDA	3.37	WDA INDEX	99
FINAL WT	1180	SCROTUM	40

Lot 84

TATTOO D 448

ABC YNOCENCIO Y153

ABC AQUILINO A424 M842750

ABC MAJA CRISTALISA S087

D 448

ABC GONDORO G311

ABC DORA ALITA M049 F957767

ABC FREYA ALITA K587

Dam's Info:

BIRTH DATE	# CLVS	AVG 205 INDEX	
3/9/2002	13	102	
BIRTH DATE	4/13/16	BIRTH WT	88
ACT W WT	564		
205 ADJ	649	205 INDEX	93
140 ADG	3.54	GAIN INDEX	102
WDA	3.37	WDA INDEX	99
FINAL WT	1105	SCROTUM	36

Lot 85

TATTOO D 362 POLL

ABC MAGICO TORO M035 POLL

ABC XENON X082 POLL M810108

ABC SEGURA DINALISA U280

D 362 POLL

ABC UNIDAD U080

ABC UNIDAD DORA ISABELA Z844 POLL RF706837

ABC JILL 3 ISABELA P111

Dam's Info:

BIRTH DATE	# CLVS	AVG 205 INDEX	
9/4/2012	2	114	
BIRTH DATE	4/1/16	BIRTH WT	88
ACT W WT	624		
205 ADJ	716	205 INDEX	102
140 ADG	3.41	GAIN INDEX	98
WDA	3.37	WDA INDEX	99
FINAL WT	1145	SCROTUM	38

Lot 86

TATTOO D 414

ABC TESORO T211 POLL

ABC YOEL Y214 M814796

ABC PROSPERA GALICA T126

D 414

ABC SALIENTE S263

ABC SALIENTE BERMONA A154 F1174169

ABC RANCHERA BERMONA W311

Dam's Info:

BIRTH DATE	# CLVS	AVG 205 INDEX	
3/19/2013	2	96	
BIRTH DATE	4/8/16	BIRTH WT	100
ACT W WT	538		
205 ADJ	638	205 INDEX	91
140 ADG	3.80	GAIN INDEX	110
WDA	3.36	WDA INDEX	99
FINAL WT	1120	SCROTUM	33

Lot 87

TATTOO D 130

ABC SALIENTE S263

ABC XALVADOR X853 M814799

ABC KORA ALANA JEAN N787

D 130

ABC MAHOMET M055

ABC FATIMA LARIANANDET S745 POLL F1082699

ABC LARIA A806

Dam's Info:

BIRTH DATE	# CLVS	AVG 205 INDEX	
8/28/2006	7	100	
BIRTH DATE	3/12/16	BIRTH WT	99
ACT W WT	734		
205 ADJ	728	205 INDEX	GRAFT
140 ADG	3.11	GAIN INDEX	90
WDA	3.36	WDA INDEX	99
FINAL WT	1210	SCROTUM	34

Lot 88

TATTOO D 442

ABC MAGICO TORO M035 POLL

ABC XENON X082 POLL M810108

ABC SEGURA DINALISA U280

D 442

ABC SALIENTE S263

ABC SALIENTE BERDINA Z809 F1168398

ABC KNUTA BERDINE 1 S391 POLL

Dam's Info:

BIRTH DATE	# CLVS	AVG 205 INDEX	
8/15/2012	2	116	
BIRTH DATE	4/12/16	BIRTH WT	86
ACT W WT	628		
205 ADJ	757	205 INDEX	108
140 ADG	3.12	GAIN INDEX	90
WDA	3.36	WDA INDEX	99
FINAL WT	1105	SCROTUM	31

Lot 89

TATTOO D 307

ABCBERNICIO P084

ABC YSIDRO Y287 M814797

ABC NICOLINI MACREYA S799

D 307

ABC NIKETORO N197 POLL

ABC NIKEKTORA FRANCESA W269 POLL F1147184

ABC MAJA FRANCESA R006

Dam's Info:

BIRTH DATE	# CLVS	AVG 205 INDEX	
4/1/2009	6	105	
BIRTH DATE	3/25/16	BIRTH WT	90
ACT W WT	688		
205 ADJ	722	205 INDEX	103
140 ADG	3.12	GAIN INDEX	90
WDA	3.36	WDA INDEX	99
FINAL WT	1165	SCROTUM	37

Lot 90

TATTOO D 435

ABC YNOCENCIO Y153

ABC AQUILINO A424 M842750

ABC MAJA CRISTALISA S087

D 435

ABC KORO K493

ABC KORA LONGROPE R359 F1082716

ABC LADANA LONGROPE J536

Dam's Info:

BIRTH DATE	# CLVS	AVG 205 INDEX	
4/1/2005	10	92	
BIRTH DATE	4/10/16	BIRTH WT	85
ACT W WT	576		
205 ADJ	653	205 INDEX	93
140 ADG	3.49	GAIN INDEX	101
WDA	3.35	WDA INDEX	99
FINAL WT	1110	SCROTUM	35

Lot 91**TATTOO D 095 POLL**

ABC UNIDAD U080

ABC EL ZUMO Z182 M841649

ABC NIKTORA BELLE S286

D 095 POLL

ABC TESORO T211 POLL

ABC TESORA KATLARGA A638 F1185243

ABC JARVA KATLARGA P382

Dam's Info:

BIRTH DATE	# CLVS	AVG 205 INDEX	
8/24/2013	1	117	
BIRTH DATE	3/9/16	BIRTH WT	83
ACT W WT	714		
205 ADJ	759	205 INDEX	117
140 ADG	3.27	GAIN INDEX	94
WDA	3.35	WDA INDEX	98
FINAL WT	1215	SCROTUM	41

Lot 92**TATTOO D 237**

ABC TESORO T211 POLL

ABC YNOCENCIO Y153 M814859

ABC JILL FERNAUTA P237

D 237

ABC TIRADOR T155 POLL

ABC TIRADORA ALITA Z082 F1157853

ABC DORA ALITA M049

Dam's Info:

BIRTH DATE	# CLVS	AVG 205 INDEX	
3/16/2012	3	100	
BIRTH DATE	3/19/16	BIRTH WT	90
ACT W WT	628		
205 ADJ	661	205 INDEX	94
140 ADG	3.61	GAIN INDEX	104
WDA	3.34	WDA INDEX	98
FINAL WT	1180	SCROTUM	35

Lot 93**TATTOO D 155**

ABC YNCENDIO Y113 POLL

ABC BENEFICIO B274 M860613

ABC LORA KATIELARGA R177

D 155

ABC LUCIENTE L707

ABC LUZ LABELLENICE P101 F1083810

ABC GONDA LANACHA M007

Dam's Info:

BIRTH DATE	# CLVS	AVG 205 INDEX	
3/12/2004	9	97	
BIRTH DATE	3/14/16	BIRTH WT	80
ACT W WT	654		
205 ADJ	657	205 INDEX	94
140 ADG	3.54	GAIN INDEX	102
WDA	3.34	WDA INDEX	98
FINAL WT	1195	SCROTUM	38

Lot 94**TATTOO D 367 POLL**

ABC BERNICIO P084

ABC ZODIACO Z166 M836564

ABC LANZA BABENICE P737

D 367 POLL

ABC RENOMBRE R142 POLL

ABC RAFAELA BELLENICE T006 POLL F1073510

ABC ULLA BELLENICE R150

Dam's Info:

BIRTH DATE	# CLVS	AVG 205 INDEX	
2/16/2007	7	104	
BIRTH DATE	4/2/16	BIRTH WT	82
ACT W WT	654		
205 ADJ	712	205 INDEX	102
140 ADG	3.11	GAIN INDEX	90
WDA	3.33	WDA INDEX	98
FINAL WT	1130	SCROTUM	32

Lot 95**TATTOO D 70**

ABC TESORO T211 POLL

ABC ZACARIAS Z104 M836562

ABC KORA JACKIE N229

D 070

ABC BERNICIO P084

ABC BERNICIA FANITA W814 F1135348

ABC EDLA FANITA J899

Dam's Info:

BIRTH DATE	# CLVS	AVG 205 INDEX	
8/15/2009	5	103	
BIRTH DATE	3/5/16	BIRTH WT	93
ACT W WT	698		
205 ADJ	673	205 INDEX	96
140 ADG	3.41	GAIN INDEX	98
WDA	3.32	WDA INDEX	98
FINAL WT	1220	SCROTUM	37

Lot 96**TATTOO D 166**

ABC BERNICIO P084

ABC ZODIACO Z166 M836564

ABC LANZA BABERNICE P737

D 166

ABC KONA K35

ABC KONA MERIALEGRA P365 F1006517

ABC LANA H265

Dam's Info:

BIRTH DATE	# CLVS	AVG 205 INDEX	
3/30/2004	11	110	
BIRTH DATE	3/15/16	BIRTH WT	102
ACT W WT	628		
205 ADJ	634	205 INDEX	91
140 ADG	3.64	GAIN INDEX	105
WDA	3.32	WDA INDEX	98
FINAL WT	1185	SCROTUM	34

Lot 97**TATTOO D 284**

ABC KNUT K532 POLL

ABC MAGICO TORO M035 POLL

ABC EDLA HILSONA J820

D 284

ABC YNOCENCIA Y153

ABC YNOCENCIA CHISPA A670 F1185248

ABC JARVA CHISPA R149

Dam's Info:

BIRTH DATE	# CLVS	AVG 205 INDEX	
9/17/2013	1	109	
BIRTH DATE	3/24/16	BIRTH WT	85
ACT W WT	618		
205 ADJ	705	205 INDEX	109
140 ADG	3.51	GAIN INDEX	101
WDA	3.32	WDA INDEX	98
FINAL WT	1155	SCROTUM	39

Lot 98**TATTOO D 239**

ABC YNCENDIO Y153 POLL

ABC BENEFICIO B274 M860613

ABC LORA KATIELARGA R177

D 239

ABC PESO P024 POLL

ABC PESA NACHAGENA X023 POLL F1126078

ABC NILARIA NACHAGENA U092

Dam's Info:

BIRTH DATE	# CLVS	AVG 205 INDEX	
3/2/2010	5	105	
BIRTH DATE	3/19/16	BIRTH WT	95
ACT W WT	588		
205 ADJ	600	205 INDEX	GRAFT
140 ADG	3.80	GAIN INDEX	110
WDA	3.31	WDA INDEX	97
FINAL WT	1170	SCROTUM	36

Lot 99**TATTOO D 303**

ABC XERXES X018 POLL

ABC ABSOLUTO CLASICO A047 M842744

ABC TESORA KNUT KATLARGA X889

D 303

ABC BERNICIO P084

ABC BERNICIA ANNA Y811 SCURS F1151913

ABC PROSPERA ANNA S474

Dam's Info:

BIRTH DATE	# CLVS	AVG 205 INDEX	
8/14/2011	3	105	
BIRTH DATE	3/25/16	BIRTH WT	95
ACT W WT	666		
205 ADJ	718	205 INDEX	103
140 ADG	3.16	GAIN INDEX	91
WDA	3.31	WDA INDEX	97
FINAL WT	1150	SCROTUM	37

Lot 100**TATTOO D 400**

ABC XERXES X018 POLL

ABC ZEBEDEO Z018 M836559

ABC RENOMBRE FRANCESA X148

D 400

ABC RADIANTE R289 SCURS

ABC RADIANTE KATLARGA U267 F1091775

ABC LANZA KATLARGA P418

Dam's Info:

BIRTH DATE	# CLVS	AVG 205 INDEX	
4/1/2008	7	101	
BIRTH DATE	4/7/16	BIRTH WT	97
ACT W WT	626		
205 ADJ	696	205 INDEX	99
140 ADG	3.13	GAIN INDEX	90
WDA	3.31	WDA INDEX	97
FINAL WT	1105	SCROTUM	36

Lot 101**TATTOO D 078A**

ABC TESORO T211 POLL

ABC ZACARIAS Z104 M836562

ABC KORA JACKIE N229

D 078A

ABC TIRADOR T155 POLL

ABC TIRADORA DORAFAY Y832 POLL F1151917

ABC RAFAELA FAY U018

Dam's Info:

BIRTH DATE	# CLVS	AVG 205 INDEX	
8/21/2011	3	101	
BIRTH DATE	3/6/16	BIRTH WT	88
ACT W WT	712		
205 ADJ	709	205 INDEX	101
140 ADG	3.25	GAIN INDEX	94
WDA	3.31	WDA INDEX	97
FINAL WT	1210	SCROTUM	39

Lot 102**TATTOO D 165 POLL**

ABC KNUT K532 POLL

ABC MAGICO TORO M035 POLL M606303

ABC EDLA HILSONA J820

D 165 POLL

ABC EXCELENTE X249 SCURS

ABC EXCELENTE MACKIE A602 POLL F1216482

ABC MAJA MACKIE T020 POLL

Dam's Info:

BIRTH DATE	# CLVS	AVG 205 INDEX	
7/31/2013	1	94	
BIRTH DATE	3/15/16	BIRTH WT	87
ACT W WT	546		
205 ADJ	608	205 INDEX	94
140 ADG	4.14	GAIN INDEX	119
WDA	3.31	WDA INDEX	97
FINAL WT	1180	SCROTUM	35

Lot 103**TATTOO D 109**

ABC SALIENTE S263

ABC XALVADOR X853 M814799

ABC KORA ALANA JEAN N787

D 109

ABC LOTHARIO L146

ABC LOTHARIA FRAMCISCA P704 F1021685

ABC BUD'S FRAMACTORY G274

Dam's Info:

BIRTH DATE	# CLVS	AVG 205 INDEX	
8/11/2004	9	99	
BIRTH DATE	3/10/16	BIRTH WT	101
ACT W WT	690		
205 ADJ	684	205 INDEX	98
140 ADG	3.30	GAIN INDEX	95
WDA	3.30	WDA INDEX	97
FINAL WT	1195	SCROTUM	31

Lot 104**TATTOO D 378 POLL**

ABC BERNICIO P084

ABC YSIDRO Y287 M814797

ABC NICOLINA MACREYA S799

D 378 POLL

ABC MAGICO TORO M035 POLL

ABC MAJA BELLA U033 POLL F1091339

ABC NIKTORA BELLE S286

Dam's Info:

BIRTH DATE	# CLVS	AVG 205 INDEX	
3/2/2008	7	95	
BIRTH DATE	4/3/16	BIRTH WT	88
ACT W WT	610		
205 ADJ	666	205 INDEX	95
140 ADG	3.30	GAIN INDEX	95
WDA	3.30	WDA INDEX	97
FINAL WT	1115	SCROTUM	36

Lot 105**TATTOO D 466A**

ABC BERNICIO P084

ABC ZODIACO Z166 M836564

ABC LANZA BABERNICE P737

D 466A

ABC LANZA L161 POLL

ABC LANZA EDIE S069 F1051023

ABC MAGGIE EDIE P204

Dam's Info:

BIRTH DATE	# CLVS	AVG 205 INDEX	
3/6/2006	8	96	
BIRTH DATE	4/6/16	BIRTH WT	99
ACT W WT	628		
205 ADJ	694	205 INDEX	99
140 ADG	3.12	GAIN INDEX	90
WDA	3.30	WDA INDEX	97
FINAL WT	1105	SCROTUM	35

Lot 106**TATTOO D 135**

ABC EL ZUMO Z182

ABC EL BELLO B042 M860610

ABC TIRADORA MACDARTE Z100

D 135

ABC SERRANO S212A

ABC SERRANA DILARIA W314 F1108929

ABC FATIMA DILARIA S254 POLL

Dam's Info:

BIRTH DATE	# CLVS	AVG 205 INDEX	
4/8/2009	6	95	
BIRTH DATE	3/12/16	BIRTH WT	100
ACT W WT	652		
205 ADJ	647	205 INDEX	92
140 ADG	3.48	GAIN INDEX	100
WDA	3.29	WDA INDEX	97
FINAL WT	1185	SCROTUM	40

Lot 107**TATTOO D 175**

ABC YNCENDIO Y113

ABC BENEFICIO B274 M860613

ABC LORA KATLARGA R177 POLL

D 175

ABC NIKETORO N197 POLL

ABC NIKETORA FANBERDINA U257 POLL F1091772

ABC HILDA FANBERDINA J125

Dam's Info:

BIRTH DATE	# CLVS	AVG 205 INDEX	
3/31/2008	7	100	
BIRTH DATE	3/15/16	BIRTH WT	88
ACT W WT	582		
205 ADJ	663	205 INDEX	ORPHAN
140 ADG	3.25	GAIN INDEX	94
WDA	3.28	WDA INDEX	97
FINAL WT	1080	SCROTUM	33

Lot 108**TATTOO D 134 POLL**

ABC XERXES X018 POLL

ABC ZACATECAS Z018 POLL M836559

ABC RENOMBRE FRANCESA X148

D 134 POLL

ABC SOBERANO S030

ABC SOBRANA FANDELINA X192 F1126133

ABC GALA FANDELINA J023

Dam's Info:

BIRTH DATE	# CLVS	AVG 205 INDEX	
3/22/2010	5	103	
BIRTH DATE	3/12/16	BIRTH WT	80
ACT W WT	652		
205 ADJ	646	205 INDEX	92
140 ADG	3.45	GAIN INDEX	99
WDA	3.28	WDA INDEX	96
FINAL WT	1180	SCROTUM	34

Lot 109**TATTOO D 221 POLL**

ABC XERXES X018

ABC ZACATECAS Z018 POLL M836559

ABC RENOMBRE FRANCESA X148

D 221 POLL

ABC SOBERANO S030

ABC SOBRANA FAY JUNE X207

ABC LOTHARIA FAY JUNE N757

Dam's Info:

BIRTH DATE	# CLVS	AVG 205 INDEX	
3/23/2010	5	92	
BIRTH DATE	3/18/16	BIRTH WT	80
ACT W WT	616		
205 ADJ	627	205 INDEX	90
140 ADG	3.56	GAIN INDEX	102
WDA	3.28	WDA INDEX	96
FINAL WT	1160	SCROTUM	34

Lot 110**TATTOO D 368**

ABC TESORO T211 POLL

ABC YNOCENCIO Y153 M814859

ABC JILL FERNAUTA P237

D 368

ABC VALENTINO W120

ABC VALENTINA DANAJEAN Y297 F1141158

ABC RAFAELA DANAJEAN T032 SCURS

Dam's Info:

BIRTH DATE	# CLVS	AVG 205 INDEX	
4/3/2011	4	98	
BIRTH DATE	4/2/16	BIRTH WT	88
ACT W WT	634		
205 ADJ	690	205 INDEX	99
140 ADG	3.11	GAIN INDEX	90
WDA	3.27	WDA INDEX	96
FINAL WT	1110	SCROTUM	34

Lot 111**TATTOO D 150**

ABC BERNICIO P084

ABC ZODIACO Z166 M836564

ABC LANZA BABERNICE P737

D 150

ABC SALIENTE S263

ABC SALIENTE QUEEN Z190 F1157835

ABC LANCERA QUEEN P026

Dam's Info:

BIRTH DATE	# CLVS	AVG 205 INDEX	
3/27/2012	3	98	
BIRTH DATE	3/13/16	BIRTH WT	96
ACT W WT	690		
205 ADJ	707	205 INDEX	101
140 ADG	3.17	GAIN INDEX	91
WDA	3.27	WDA INDEX	96
FINAL WT	1175	SCROTUM	36

Lot 112**TATTOO D 026 POLL**

ABC MAGICO TORO M035 POLL

ABC XERXES X018 POLL M810103

ABC MAJA MACKIE T020 POLL

D 026 POLL

ABC ZELTZIN Z178

ABC ZELTZIN SARA CLARA B044 POLL F1190994

ABC NIKETORA SARA CLARA W380 POLL

Dam's Info:

BIRTH DATE	# CLVS	AVG 205 INDEX	
3/4/2014	1	98	
BIRTH DATE	2/26/16	BIRTH WT	93
ACT W WT	616		
205 ADJ	636	205 INDEX	98
140 ADG	3.98	GAIN INDEX	115
WDA	3.27	WDA INDEX	96
FINAL WT	1225	SCROTUM	35

Lot 113**TATTOO D 310 SCURS**

ABC XERXES X010 POLL

ABC ABSOLUTO CLASICO A047 M842744

ABC TESORA KNUT KATLARGA X889

D 310 SCURS

ABC NIKETORA N197 POLL

ABC NIKETORA FINEDANA S747 POLL F1082704

ABC DANA EDE ANN J350 POLL

Dam's Info:

BIRTH DATE	# CLVS	AVG 205 INDEX	
9/1/2006	8	105	
BIRTH DATE	3/26/16	BIRTH WT	98
ACT W WT	734		
205 ADJ	773	205 INDEX	110
140 ADG	2.59	GAIN INDEX	75
WDA	3.27	WDA INDEX	96
FINAL WT	1130	SCROTUM	33

Lot 114**TATTOO D 016**

ABC EXHIBICION X138 POLL

ABC ZEBEDEO Z128 M836563

ABC HERNA HERCULA M071

D 016

ABC TESORO T211

ABC TESORA GENACLEO B245 F1191940

ABC RAFAELA GENACLEO T019

Dam's Info:

BIRTH DATE	# CLVS	AVG 205 INDEX	
3/25/2014	1	104	
BIRTH DATE	2/24/16	BIRTH WT	80
ACT W WT	664		
205 ADJ	674	205 INDEX	104
140 ADG	3.70	GAIN INDEX	107
WDA	3.26	WDA INDEX	96
FINAL WT	1230	SCROTUM	35

Lot 115 TATTOO D 048 POLL
 ABC KNUT K532 POLL
 ABC MAGICO TORO M035 POLL M660303
 ABC EDLA HILSONA J820
D 048 POLL
 ABC EXCELSIOR X380
 ABC EXCELSIOR SIMONE A645 F1185244
 ABC JOYA SIMONE T004

Dam's Info:

BIRTH DATE	# CLVS	AVG 205 INDEX	
8/29/13	1	115	
BIRTH DATE	3/2/16	BIRTH WT	97
ACT W WT	720		
205 ADJ	746	205 INDEX	115
140 ADG	3.17	GAIN INDEX	91
WDA	3.26	WDA INDEX	96
FINAL WT	1205	SCROTUM	37

Lot 116 TATTOO D 124 POLL
 ABC TESORO T211 POLL
 ABC YOEL Y214 M814796
 ABC PROSPERA GALICA T126
D 124 POLL
 ABC BERNICIO P084
 ABC BERNICIA HILNADET X276 POLL F1126147
 ABC EDDY TORNA L252

Dam's Info:

BIRTH DATE	# CLVS	AVG 205 INDEX	
3/27/2010	5	94	
BIRTH DATE	3/11/16	BIRTH WT	87
ACT W WT	698		
205 ADJ	689	205 INDEX	98
140 ADG	3.12	GAIN INDEX	90
WDA	3.25	WDA INDEX	96
FINAL WT	1175	SCROTUM	33

Lot 117 TATTOO D 137
 ABC YNCENDIO Y153
 ABC BENEFICIO B274 M860613
 ABC LORA KATIELARGA R177 POLL
D 137
 ABC RAFAEL R246 SCURS
 ABC RAFAELA HILSONA X277 POLL F1126148
 ABC KORA HILSONA R425

Dam's Info:

BIRTH DATE	# CLVS	AVG 205 INDEX	
3/27/2010	5	105	
BIRTH DATE	3/12/16	BIRTH WT	86
ACT W WT	718		
205 ADJ	712	205 INDEX	102
140 ADG	2.95	GAIN INDEX	85
WDA	3.25	WDA INDEX	96
FINAL WT	1170	SCROTUM	35

Lot 118 TATTOO D283
 ABC SALIENTE S263
 ABC XALVADOR X853 M814799
 ABC KORA ALANA JEAN N787
D 283
 ABC BERNICIO P084
 ABC BERNICIA LADYQUEEN Y802 F1151908
 ABC LOTA QUEEN P310 POLL

Dam's Info:

BIRTH DATE	# CLVS	AVG 205 INDEX	
8/7/2011	3	92	
BIRTH DATE	3/25/16	BIRTH WT	101
ACT W WT	646		
205 ADJ	696	205 INDEX	99
140 ADG	3.13	GAIN INDEX	90
WDA	3.24	WDA INDEX	95
FINAL WT	1125	SCROTUM	31

Lot 119 TATTOO D 127 POLL
 ABC SALIENTE S263
 ABC XALVADOR X853 M814799
 ABC KORA ALANA JEAN N787
D 127 POLL
 ABC MAGICO TORO M035 POLL
 ABC MAJA BARONESA JADE R014 POLL F1030016
 ABC LADINA JADE N354

Dam's Info:

BIRTH DATE	# CLVS	AVG 205 INDEX	
2/23/2005	10	96	
BIRTH DATE	3/11/16	BIRTH WT	82
ACT W WT	690		
205 ADJ	684	205 INDEX	98
140 ADG	3.14	GAIN INDEX	90
WDA	3.24	WDA INDEX	95
FINAL WT	1170	SCROTUM	35

Lot 120 TATTOO D 216
 ABC UNIDAD U080
 ABC EL ZUMO Z182 M841649
 ABC NIKTORA BELLE S286
D 216
 ABC ZODIACO Z166
 ABC ZODIACA ROBGENA B199
 ABC TESORA ROBGENA X809

Dam's Info:

BIRTH DATE	# CLVS	AVG 205 INDEX	
3/21/2014	1	100	
BIRTH DATE	3/18/16	BIRTH WT	99
ACT W WT	578		
205 ADJ	648	205 INDEX	100
140 ADG	3.71	GAIN INDEX	107
WDA	3.23	WDA INDEX	95
FINAL WT	1145	SCROTUM	37

Lot 121**TATTOO D 384**

ABC TESORO T211 POLL

ABC YOEL Y214 M814796

ABC PROSPERA GALICA T126

D 384

ABC EXCELENTE X 249 SCURS

ABC EXCELENTE RIOBERNICE A225 POLL F1174262

ABC TESORA ALI RIOBERNICE W825

Dam's Info:

BIRTH DATE	# CLVS	AVG 205 INDEX	
3/24/2013	2	90	
BIRTH DATE	4/4/16	BIRTH WT	87
ACT W WT	535		
205 ADJ	626	205 INDEX	89
140 ADG	3.63	GAIN INDEX	105
WDA	3.23	WDA INDEX	95
FINAL WT	1090	SCROTUM	32

Lot 122**TATTOO D 329**

ABC XERXES X018 POLL

ABC ZACATECAS Z018 M836559

ABC RENOMBRE FRANCESA X148

D 329

ABC SALIENTE S263

ABC SALIENTE NANDET U277 F1091782

ABC EDDY TORNA L252

Dam's Info:

BIRTH DATE	# CLVS	AVG 205 INDEX	
4/2/2008	6	105	
BIRTH DATE	3/27/16	BIRTH WT	90
ACT W WT	712		
205 ADJ	754	205 INDEX	108
140 ADG	2.63	GAIN INDEX	76
WDA	3.23	WDA INDEX	95
FINAL WT	1115	SCROTUM	36

Lot 123**TATTOO D 217 POLL**

ABC KNUT K532 POLL

ABC MAGICO TORO M035 POLL M660303

ABC EDLA HILSONA J820

D 217 POLL

ABC TESORA T211 POLL

ABC TESORA GENACLEO A631 POLL F1185241

ABC MAJA GENACLEO U012

Dam's Info:

BIRTH DATE	# CLVS	AVG 205 INDEX	
8/22/2013	1	117	
BIRTH DATE	3/19/16	BIRTH WT	90
ACT W WT	680		
205 ADJ	755	205 INDEX	117
140 ADG	3.01	GAIN INDEX	87
WDA	3.23	WDA INDEX	95
FINAL WT	1140	SCROTUM	36

Lot 124**TATTOO D 218**

ABC TESORO T211 POLL

ABC YNOCENCIO Y153 M814859

ABC JILL FERNAUTA P237

D 218

ABC NIKETORO N197 POLL

ABC NIKETORA BERNADA R089 SCURS F1029921

ABC LATORA LABERNA J047

Dam's Info:

BIRTH DATE	# CLVS	AVG 205 INDEX	
3/10/2005	9	105	
BIRTH DATE	3/18/16	BIRTH WT	100
ACT W WT	696		
205 ADJ	711	205 INDEX	102
140 ADG	2.90	GAIN INDEX	84
WDA	3.22	WDA INDEX	95
FINAL WT	1140	SCROTUM	34

Lot 125**TATTOO D 381**

ABC TESORO T211 POLL

ABC YOEL Y214 M814796

ABC PROSPERA GALICA T126

D 381

ABC ULTIMO LATINO U042 POLL

ABC ULTA LATINA DILARIA A257 POLL F1174266

ABC GERA DILARIA M106

Dam's Info:

BIRTH DATE	# CLVS	AVG 205 INDEX	
3/25/2013	2	95	
BIRTH DATE	4/4/16	BIRTH WT	99
ACT W WT	592		
205 ADJ	688	205 INDEX	98
140 ADG	3.19	GAIN INDEX	92
WDA	3.20	WDA INDEX	94
FINAL WT	1080	SCROTUM	38

Lot 126**TATTOO D 187**

ABC VOLVER W142

ABC ALPANTORO A008 M842743

ABC TIRADORA RIO BERNICE X884

D 187

ABC TIRADOR T155 POLL

ABC TIRADORA BERNAUTA Z205 F1157852

ABC JOYA BERNAUTA L724

Dam's Info:

BIRTH DATE	# CLVS	AVG 205 INDEX	
3/28/2012	3	90	
BIRTH DATE	3/16/16	BIRTH WT	98
ACT W WT	592		
205 ADJ	617	205 INDEX	90
140 ADG	3.55	GAIN INDEX	102
WDA	3.19	WDA INDEX	94
FINAL WT	1135	SCROTUM	39

Lot 127 TATTOO D 003 POLL
 ABC TESORO T211 POLL
 ABC YNOCENCIO Y153 M814859
 ABC JILL FERNAUTA P237
D 003 POLL
 ABC LORATIO L426
 ABC LOTA QUEEN P310 POLL F1006508
 ABC DUNIA H80

Dam's Info:

BIRTH DATE	# CLVS	AVG 205 INDEX	
3/26/2004	10	98	
BIRTH DATE	2/9/16	BIRTH WT	102
ACT W WT	766		
205 ADJ	676	205 INDEX	97
140 ADG	3.13	GAIN INDEX	90
WDA	3.18	WDA INDEX	93
FINAL WT	1245	SCROTUM	36

Lot 128 TATTOO D 296 TWIN
 ABC XERXES X018 POLL
 ABC ABSOLUTO CLASICO A047 M842744
 ABC TESORA KNUT KATLARGA X889
D 296 TWIN
 ABC VICTORIO W385 M789237
 ABC VICTORIA CELINA Y831 POLL
 ABC HERMOSA CELINA H750 F928238

Dam's Info:

BIRTH DATE	# CLVS	AVG 205 INDEX	
8/18/2011	4-1 SET TWINS	93	
BIRTH DATE	3/24/16	BIRTH WT	70
ACT W WT	592		
205 ADJ	639	205 INDEX	91
140 ADG	3.35	GAIN INDEX	97
WDA	3.18	WDA INDEX	93
FINAL WT	1105	SCROTUM	36

Lot 129 TATTOO D 132 TWIN
 ABC YOEL Y214
 ABC EL BOLSO B077 M860611
 ABC RAFAEL FRANCESCA U854 POLL
D 132 TWIN
 ABC VALENTINO W120
 ABC VALENTINA LEDERITA A022 F1173485
 ABC MAJA LEDERITA Y169

Dam's Info:

BIRTH DATE	# CLVS	AVG 205 INDEX	
2/25/2013	3-1 SET TWINS	104	
BIRTH DATE	3/9/16	BIRTH WT	75
ACT W WT	554		
205 ADJ	583	205 INDEX	GRAFT
140 ADG	4.19	GAIN INDEX	121
WDA	3.29	WDA INDEX	93
FINAL WT	1195	SCROTUM	36

Lot 130 TATTOO D 360
 ABC YNOCENCIO Y153
 ABC AQUILINO A424 M842750
 ABC MAJA CRISTALISA S087
D 360
 ABC RANCHERO R379
 ABC RANCHERA JACPAMELA T063 F1073493
 ABC JACOBA JACPAMELA P701 SCURS

Dam's Info:

BIRTH DATE	# CLVS	AVG 205 INDEX	
3/2/2007	7	90	
BIRTH DATE	4/1/16	BIRTH WT	92
ACT W WT	523		
205 ADJ	564	205 INDEX	GRAFT
140 ADG	3.61	GAIN INDEX	104
WDA	3.16	WDA INDEX	93
FINAL WT	1075	SCROTUM	32

Lot 131 TATTOO D 145 POLL
 ABC XERXES X018 POLL
 ABC ZACATECAS Z018 M836559
 ABC RENOMBRE FRANCESCA X148
D 145 POLL
 ABC LOTHARIO L146 POLL
 ABC LOTA GENA N328 SCURS F983549
 ABC LITA BERALENA E097

Dam's Info:

BIRTH DATE	# CLVS	AVG 205 INDEX	
4/8/2003	12	99	
BIRTH DATE	3/13/16	BIRTH WT	88
ACT W WT	676		
205 ADJ	676	205 INDEX	97
140 ADG	2.97	GAIN INDEX	86
WDA	3.15	WDA INDEX	93
FINAL WT	1130	SCROTUM	32

Lot 132 TATTOO D 136
 ABC XERXES X018 POLL
 ABC ARGENTORO A372 M842749
 ABC TITANA ABRAGENA X839
D 136
 ABC SERRANO S212A
 ABC SERRANA MACLARANICE Z103 F1157808
 ABC JILL BERNICE M479

Dam's Info:

BIRTH DATE	# CLVS	AVG 205 INDEX	
3/19/2012	3	101	
BIRTH DATE	3/12/16	BIRTH WT	100
ACT W WT	652		
205 ADJ	667	205 INDEX	92
140 ADG	3.12	GAIN INDEX	90
WDA	3.14	WDA INDEX	92
FINAL WT	1130	SCROTUM	33

Lot 133**TATTOO D 029**

ABC NIKETORO N197 POLL

ABC SEGURO S168 POLL M751500

ABC KANA SHARON M467

D 029

ABC XAVIER X332 POLL

ABC XAVIERA EXSONJA B190 F1191861

ABC BERNICIA EXSONJA W886

Dam's Info:

BIRTH DATE	# CLVS	AVG 205 INDEX	
3/19/2014	1	107	
BIRTH DATE	2/27/16	BIRTH WT	98
ACT W WT	672		
205 ADJ	690	205 INDEX	107
140 ADG	3.25	GAIN INDEX	94
WDA	3.13	WDA INDEX	92
FINAL WT	1170	SCROTUM	34

Lot 134**TATTOO D 328 SCURS**

ABC YSIDRO Y287

ABC BRIOSO B273 M860612

ABC SUBIDA LACYFAY U239

D 328 SCURS

ABC TESORO T211 POLL

ABC TESORA HANNAH A092 POLL F1173641

ABC MAGGIE HANNAH T187

Dam's Info:

BIRTH DATE	# CLVS	AVG 205 INDEX	
3/13/2013	2	96	
BIRTH DATE	3/27/16	BIRTH WT	90
ACT W WT	598		
205 ADJ	672	205 INDEX	96
140 ADG	3.12	GAIN INDEX	90
WDA	3.12	WDA INDEX	92
FINAL WT	1075	SCROTUM	34

Lot 135**TATTOO D 364**

ABC EXCELENTE X249

ABC ANCHO A058 SCURS M842745

ABC PROSPERA GENACLEO S479

D 364

ABC MAGICO TORO M035 POLL

ABC MAJA ABRAGENA T806 POLL F1085089

ABC KORA ROBGENA N146

Dam's Info:

BIRTH DATE	# CLVS	AVG 205 INDEX	
8/17/2007	6	105	
BIRTH DATE	4/2/16	BIRTH WT	78
ACT W WT	468		
205 ADJ	508	205 INDEX	
ORPHAN			
140 ADG	3.80	GAIN INDEX	110
WDA	3.10	WDA INDEX	91
FINAL WT	1050	SCROTUM	32

Lot 136**TATTOO D 151 POLL**

ABC XERXES X018 POLL

ABC ZACATECAS Z018 POLL M836559

ABC RENOMBRE FRANCESA X148

D 151 POLL

ABC VOLVER W142

ABC VELVET NAUTYMARIE Y016 POLL F1140852

ABC SALIENTE NAUTYMARIE W306

Dam's Info:

BIRTH DATE	# CLVS	AVG 205 INDEX	
3/4/2011	4	92	
BIRTH DATE	3/13/16	BIRTH WT	88
ACT W WT	578		
205 ADJ	576	205 INDEX	GRAFT
140 ADG	3.48	GAIN INDEX	100
WDA	3.09	WDA INDEX	91
FINAL WT	1110	SCROTUM	33

Lot 137**TATTOO D 423**

ABC XERXES X018 POLL

ABC ZACATECAS Z018 POLL M836559

ABC RENOMBRE FRANCESA X148

D 423

ABC YOEL Y214

ABC YOEL FRANCISCA B138 F1191835

ABC TITANIA FRANCISCA X108

Dam's Info:

BIRTH DATE	# CLVS	AVG 205 INDEX	
3/15/2014	1	93	
BIRTH DATE	3/9/16	BIRTH WT	85
ACT W WT	552		
205 ADJ	601	205 INDEX	93
140 ADG	3.71	GAIN INDEX	107
WDA	3.09	WDA INDEX	91
FINAL WT	1120	SCROTUM	34

Lot 138**TATTOO D 038**

ABC NIKETORO N197 POLL

ABC SEGURO S168 POLL M751500

ABC KANA SHARON M467

D 038

ABC ZODIACO Z166

ABC ZODIACA MILARA B097 F1191008

ABC VAQUERA MILARA Y408

Dam's Info:

BIRTH DATE	# CLVS	AVG 205 INDEX	
3/12/2014	1	100	
BIRTH DATE	2/28/16	BIRTH WT	98
ACT W WT	624		
205 ADJ	648	205 INDEX	100
140 ADG	3.44	GAIN INDEX	99
WDA	3.08	WDA INDEX	91
FINAL WT	1150	SCROTUM	35

Lot 139**TATTOO D 041 POLL**

ABC EXHIBICION X338 POLL

ABC ZEBEDEO Z128 M836563

ABC HERNA HERCULA M071

D 041 POLL

ABC XALVADOR X853

ABC XALVADORA ANNABARIA B379 F1191981

ABC MAJA ANNABARIA S079

Dam's Info:

BIRTH DATE	# CLVS	AVG 205 INDEX	
4/10/2014	1	93	
BIRTH DATE	2/29/16	BIRTH WT	81
ACT W WT	570		
205 ADJ	599	205 INDEX	93
140 ADG	3.73	GAIN INDEX	107
WDA	3.06	WDA INDEX	90
FINAL WT	1140	SCROTUM	31

Lot 140**TATTOO D 004**

ABC UNIDAD U080

ABC EL ZUMO Z182 M841649

ABC NIKTORA BELLE S286

D 004

ABC XAVIER X332 POLL

ABC XAVIERA BAMARKARI B188 F1191860

ABC LOTA BAMARKARI R200

Dam's Info:

BIRTH DATE	# CLVS	AVG 205 INDEX	
3/20/2014	1	97	
BIRTH DATE	2/19/16	BIRTH WT	89
ACT W WT	626		
205 ADJ	630	205 INDEX	97
140 ADG	3.56	GAIN INDEX	102
WDA	3.06	WDA INDEX	90
FINAL WT	1170	SCROTUM	33

Lot 141**TATTOO D 210**

ABC TESORO T211 POLL

ABC ZACARIAS Z104 M836562

ABC KORA JACKIE N229

D 210

ABC RANCHERO R379

ABC RANCHERA CLEO W201 F1129692

ABC NIKETORA CLEO R123

Dam's Info:

BIRTH DATE	# CLVS	AVG 205 INDEX	
3/27/2009	6	90	
BIRTH DATE	3/17/16	BIRTH WT	84
ACT W WT	604		
205 ADJ	612	205 INDEX	90
140 ADG	3.14	GAIN INDEX	91
WDA	3.06	WDA INDEX	90
FINAL WT	1085	SCROTUM	36

Lot 142**TATTOO D 033**

ABC MAGICO TORO M035 POLL

ABC XERXES X018 POLL M810103

ABC MAJA MACKIE T020 POLL

D 033

ABC UNIVERSO U363

ABC UNIVERSA LONGROPE B082 POLL F1191002

ABC KORA LONGROPE R359

Dam's Info:

BIRTH DATE	# CLVS	AVG 205 INDEX	
3/10/2014	1	94	
BIRTH DATE	2/28/16	BIRTH WT	93
ACT W WT	580		
205 ADJ	607	205 INDEX	94
140 ADG	3.66	GAIN INDEX	105
WDA	3.06	WDA INDEX	90
FINAL WT	1140	SCROTUM	35

Lot 143**TATTOO D 025**

ABC UNIDAD U080

ABC EL ZUMO Z182 M841649

ABC NIKTORA BELLE S286

D 025

ABC ZELTZIN Z178

ABC ZELTZIN NADET B099 POLL

ABC NILARIA NADET R141 POLL

Dam's Info:

BIRTH DATE	# CLVS	AVG 205 INDEX	
3/12/20014	1	94	
BIRTH DATE	2/26/16	BIRTH WT	98
ACT W WT	588		
205 ADJ	610	205 INDEX	94
140 ADG	3.64	GAIN INDEX	105
WDA	3.05	WDA INDEX	90
FINAL WT	1145	SCROTUM	34

Lot 144**TATTOO D 024**

ABC BERNICIO P084

ABC YSIDRO Y072 M814797

ABC NICOLINA MACREYA S799

D 024

ABC EXPLOSIVO X409

ABC EXPLOSIVA BERDARMAC B298 POLL F1191957

ABC STIA BERDARMAC M286

Dam's Info:

BIRTH DATE	# CLVS	AVG 205 INDEX	
3/29/2014	1	92	
BIRTH DATE	2/26/16	BIRTH WT	96
ACT W WT	568		
205 ADJ	592	205 INDEX	92
140 ADG	3.77	GAIN INDEX	109
WDA	3.05	WDA INDEX	90
FINAL WT	1145	SCROTUM	35

Lot 145 TATTOO D 275A POLL

ABC UNIDAD U080

ABC EL ZUMO Z182 M841649

ABC NIKTORA BELLE S286

D 275A POLL

ABC YNOCENCIO Y153

ABC YNOCENCIA FAY JUNE B156 POLL F1191846

ABC NIKETORA FAY JUNE W107 POLL

Dam's Info:

BIRTH DATE	# CLVS	AVG 205 INDEX	
3/17/2014	1	96	
BIRTH DATE	3/23/16	BIRTH WT	89
ACT W WT	538		
205 ADJ	619	205 INDEX	96
140 ADG	3.44	GAIN INDEX	99
WDA	3.05	WDA INDEX	90
FINAL WT	1065	SCROTUM	31

Lot 146 TATTOO D 128 POLL

ABC TESORO T211 POLL

ABC YNOCENCIO Y153 M814859

ABC JILL FERNAUTA P237

D 128 POLL

ABC LANZA L161 POLL

ABC LANZA FINEDMA P395 POLL F1006556

ABC ULTRAMA ANN L126 POLL

Dam's Info:

BIRTH DATE	# CLVS	AVG 205 INDEX	
4/2/2004	10	103	
BIRTH DATE	3/11/16	BIRTH WT	86
ACT W WT	574		
205 ADJ	570	205 INDEX	GRAFT
140 ADG	3.44	GAIN INDEX	99
WDA	3.05	WDA INDEX	90
FINAL WT	1100	SCROTUM	33

Lot 147 TATTOO D 059

ABC EXHIBICION X138 POLL

ABC ZEBEDEO Z128 M836563

ABC HERNA HERCULA M071

D 059

ABC XALVADOR X853

ABC XALVADORA ROSALINA B338 F1191969

ABC JACOBA ROSALINA N192 POLL

Dam's Info:

BIRTH DATE	# CLVS	AVG 205 INDEX	
4/3/2014	1	100	
BIRTH DATE	3/4/16	BIRTH WT	98
ACT W WT	614		
205 ADJ	650	205 INDEX	100
140 ADG	3.31	GAIN INDEX	95
WDA	3.04	WDA INDEX	90
FINAL WT	1120	SCROTUM	36

**Stout feeder heifers 10/16/14
from Diamond Willow Ranch,
James & DaRae Larson family of Belt, MT**



Thank You

We would like to thank everyone who has attended our sale.

*Thank you for coming and to all our bull buyers,
a special thank you!*

*We feel that we have presented a quality product and
that you will be well satisfied.*

Cobb Charolais Ranch, Inc.

John & Cheryl

Mike & Sarah

4C COBB CHAROLAIS RANCH, INC
P O Box 348
Augusta, Montana 59410

First Class Mail

TO: